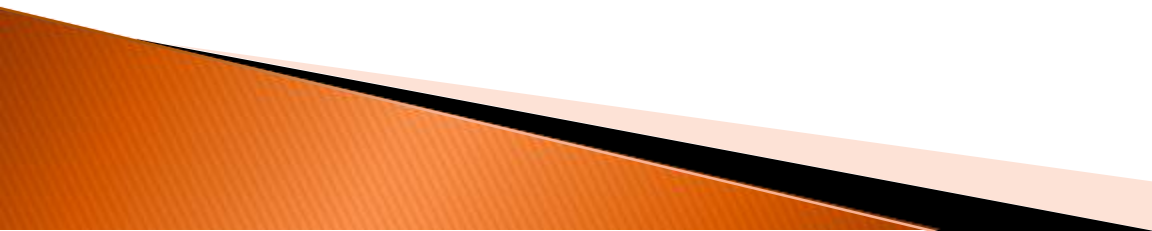


South Bay / Peninsula High Road Roundtable

Purpose

Bring together South Bay and Peninsula labor, community, business, and local government organizations committed to economic and racial justice, for an 18-month collaboration to **re-envision regional economic development planning**, centered around the values of **equity, high-road employment, sustainability and climate resilience**, and shaped by **workers and impacted community members themselves**.



What have we built together?



390 stakeholders



81 stakeholder
workgroup meetings



9 High Road
Roundtable meetings



2 counties – 36 cities
and towns – 2.5
million people

Updates on CERF & Bay Area HRTC (aka "CA Jobs First")

BA-HRTC Regional Plans

Phase 1: Baseline
conditions
Due 12/31/23

Phase 2: Strategic
Investments and
Projects
Due 8/30/24

Phase 2 Plans will
inform State's criteria
for which projects
receive Implementation
funding.

CERF Catalyst (\$14 M to BA-HRTC)

BA-HRTC will request
pre-development
proposals from
subregions (tentatively
in May 2024)

State will release \$ in
May 2024 for regional
coordination, capacity
building & pre-
development.

Funds must be spent by
9/30/26.

CERF Implementation Grants (\$268 M statewide)

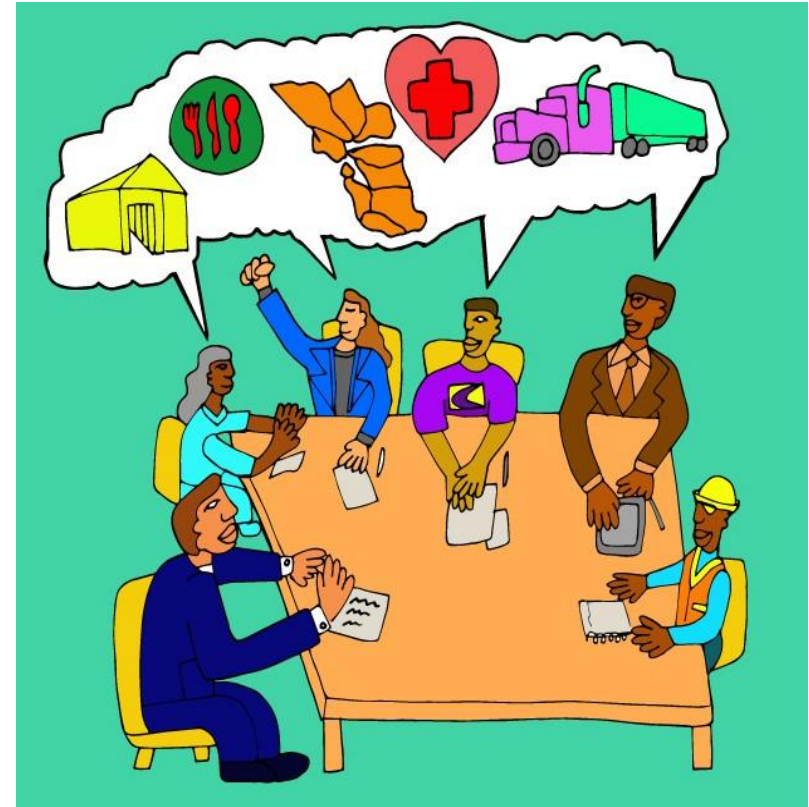
Initial solicitation for
'ready-to-go' initiatives
released fall 2024
(tentative release date
9/1/24)

Possible 2nd round
solicitation in summer
2025.

For awarded grants,
funds must be spent by
end of 2027

High Road Roundtable Workgroups

- ▶ Based around the High Road values.
- ▶ Member-driven spaces where people come together and develop their own ideas.
- ▶ Established according to greatest areas of interest, based on surveys and ongoing participation.



High ranked proposals

- ▶ **Green Buildings & Decarbonization Workforce Assessment**

Backbone org: NOVA

Partners: Silicon Valley Clean Energy, Joint Venture Silicon Valley, Lighthouse Silicon Valley, JobTrain, WPUSA, Building Skills

Partnership, City of Half Moon Bay, Revalue.io, SCBTC, Menlo Spark

- ▶ **Matching Platform for IHSS**

- ▶ Backbone org: SEIU 2015

Partners: CCA, Carina, SCC Public Authority and SSA, other counties TBD, CDSS

High ranked proposals

- ▶ **Manufacturing Futures**

Backbone org: WPUSA

Partners: Applied Materials, Bay Area Community College Consortium, De Anza College, Foothill College, IAM 190 & 1101, JobTrain, Machinists Institute, NOVAworks, SMW 104, work2future

- ▶ **Worker Cooperatives**

- ▶ Backbone orgs: La Esquina (joint initiative w/ Excite Credit Union, Latino Business Foundation & SOMOS); El Concilio

Partners: Redwood City Office of Equity & Economic Inclusion, Veggielution, Local Co-Ops: De Colores, Lazos Fuertes, Cocinando con Amor, META, Corazón y Pueblo Consulting

Proposals under development

- ▶ **High Road to Childcare & Early Childhood Education**

Backbone org: Santa Clara County Office of Education

Partners: San Mateo County Office of Education, FIRST 5 Santa Clara County, SEIU 521, 4Cs San Mateo County, Grail Family Services, YMCA Silicon Valley, SCC Office of Children and Families Policy, Bay Area Community College Consortium, WPUSA

- ▶ **ArtsHub**

- ▶ Backbone orgs: MACLA and EPACenter

Partners: Musicians Union Local 6, San Jose Taiko, others tbd

Proposals under development

- ▶ **Stronger Entrepreneurs, Stronger Bay Coalition**

Backbone orgs: Prosperity Lab & Renaissance Entrepreneurship Center
Partners: City of Half Moon Bay City Manager's Office, Small Business Majority, City of Daly City OED, Elevate Community Center, Centro Community Partners, Community Strong Strategies, Sunday Friends, Veggielution, Yacanex Community, Morgan Hill Chamber of Commerce, City of San Jose OED, Excite Credit Union, Immigrants Rising, Enterprise Foundation, City of Redwood City Economic Development, Lighthouse Silicon Valley, SFMade, City of SSF OED, SSF Chamber of Commerce, TMC Community Capital