

April 2022 Labor Market Summary

San Jose-Sunnyvale-Santa Clara Metropolitan Statistical Area
Santa Clara County + San Benito County

Unemployment Rates

April 2022 (prelim)

MSA: 2.5%

County: 2.1%

State: 3.8%

USA: 3.3%

March 2022

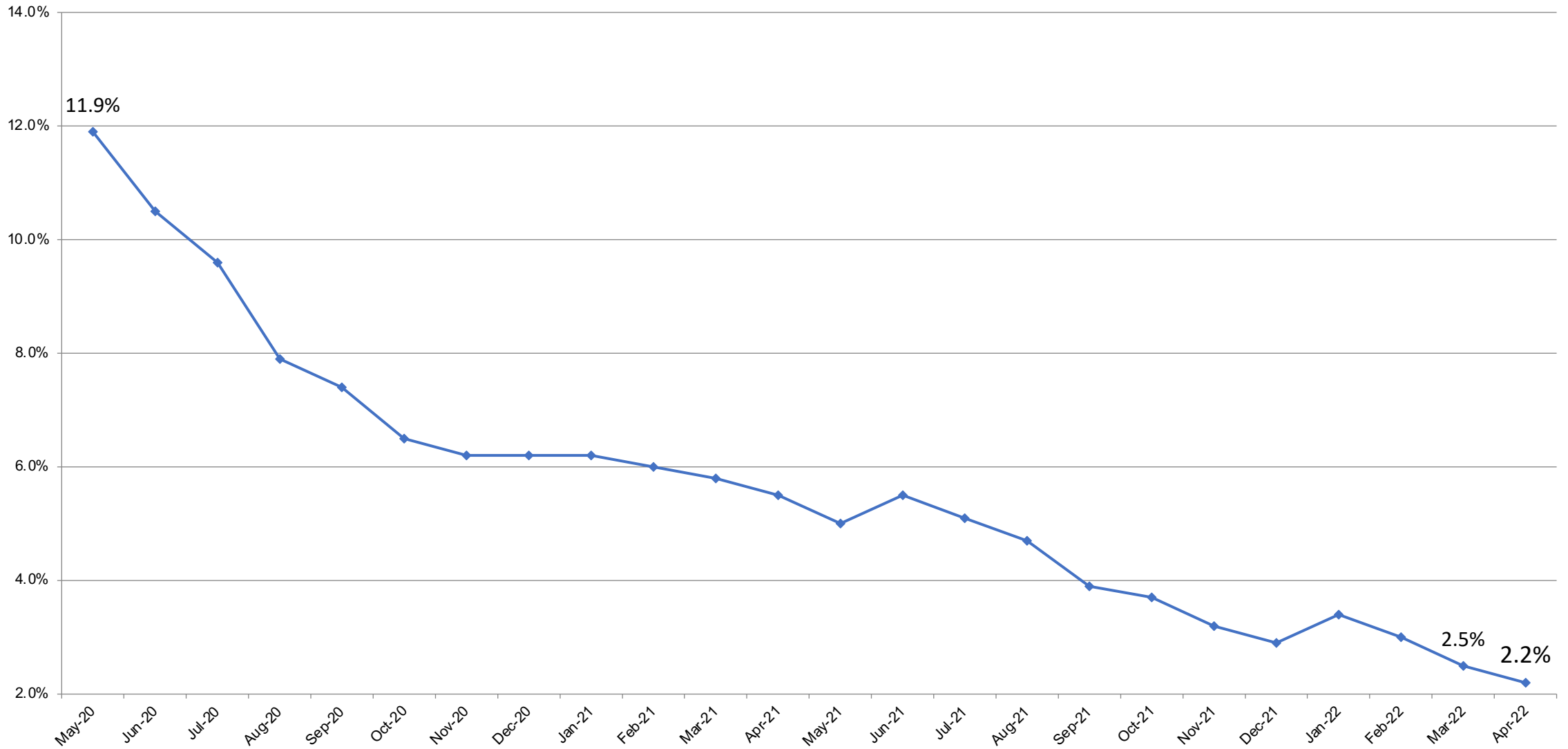
MSA: 3.0% (revised)

County: 2.5%

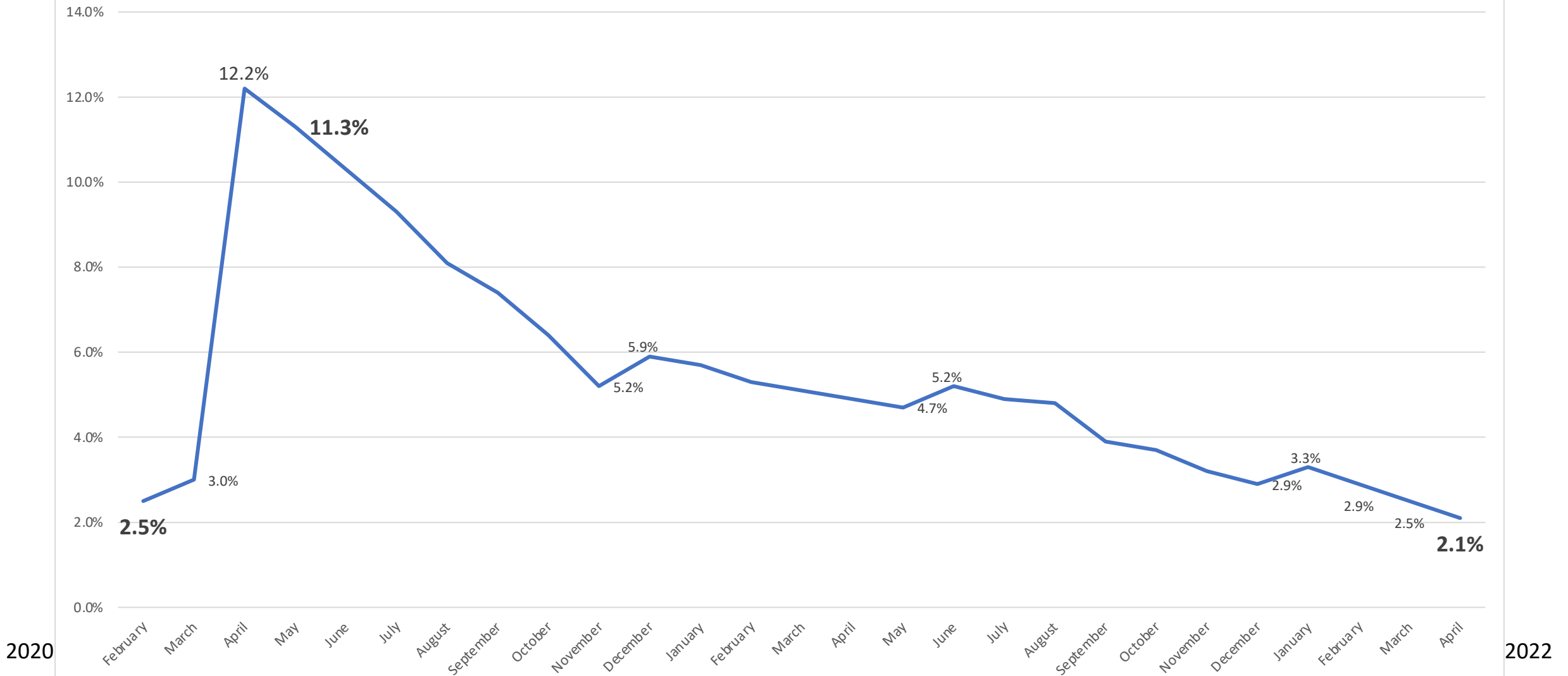
State: 4.2%

USA: 3.8%

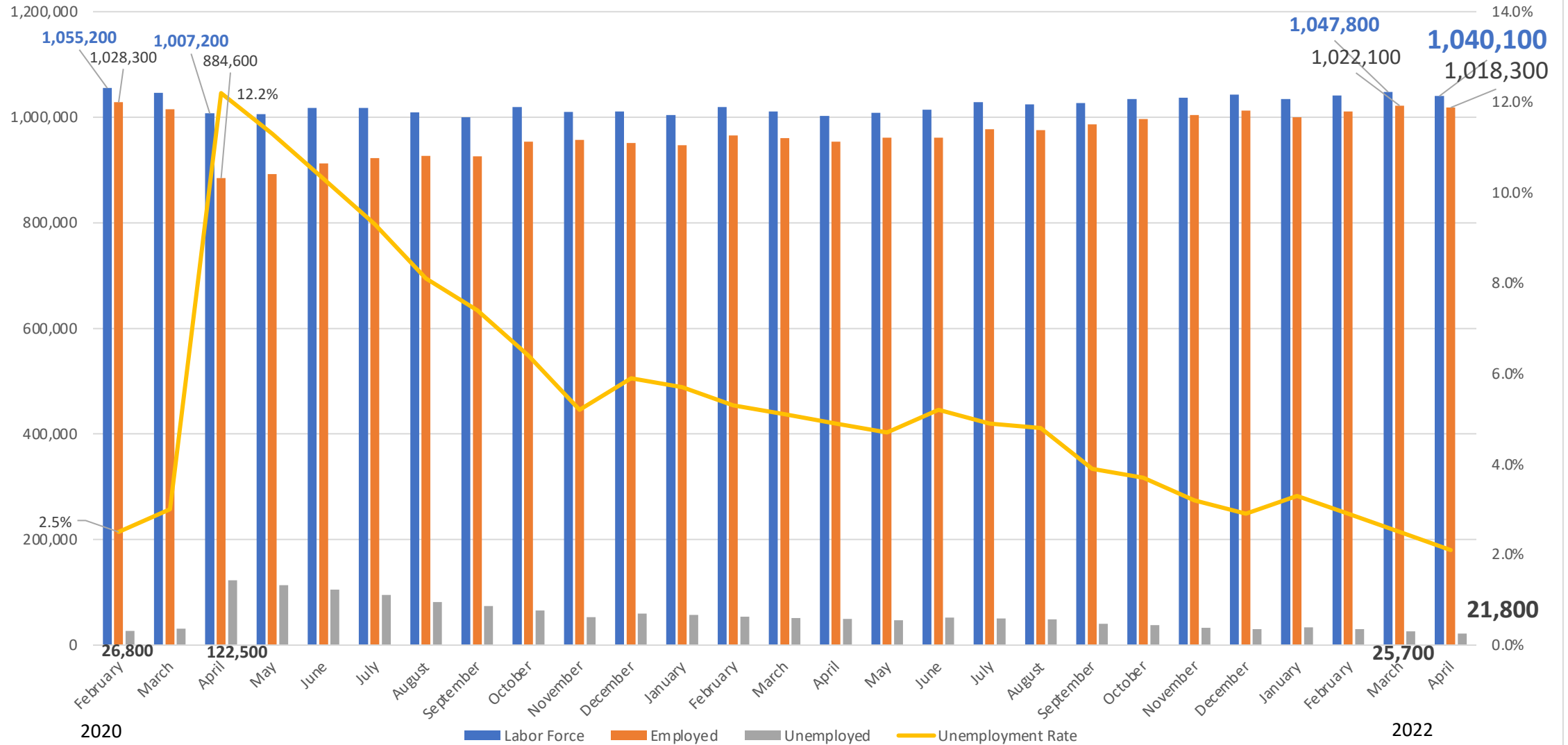
MSA Unemployment Rate Historical Trend



Santa Clara County Unemployment Rate



Labor Force in Santa Clara County



Between March 2022 and April 2022

MSA Employment Rose 9,300 (6,700) to 1,154,000

- Leisure and Hospitality up 4,400
 - Food Services and Drinking Places — 3,200
- Professional & Business Services up 1,300 net (professional, scientific and technical services)
- Manufacturing up 1,100 (durable goods)
- Government, Construction, Financial Activities also up

April to April: MSA added 62,400 Jobs

5.7% Increase

- Leisure and Hospitality up 24,500
 - Food Services and Drinking Places: 17,500
- Professional and Business Services up 12,600
 - Professional, Scientific, and Technical Services: 10,100
- Educational and Health Services up 6,500
 - Healthcare and Social Assistance: 4,300
- Manufacturing up 5,600
- Information up 4,300
- Transportation & Utilities—3,000; Construction—2,600

Gap in the Labor Force (April 2022)

Nationwide

- 11.4 million openings — 5.5 million unemployed
- Labor Force Participation Rate: 63.4% Jan 2020 to 62.2% Dec 2021
- More Americans nearing Retirement Age than are Entering Working Age
- Lack and cost of Child Care

Number of unemployed persons per job opening, seasonally adjusted

Click and drag within the chart to zoom in on time periods



Hover over chart to view data.

Note: Shaded area represents recession, as determined by the National Bureau of Economic Research.

Source: U.S. Bureau of Labor Statistics.



Gap in the Labor Force — Local Comparison

Nationwide

- 11.4 million openings — 5.5 million unemployed
- Labor Force Participation Rate: 63.4% Jan 2020 to 62.2% Apr 2022
- More Americans nearing Retirement Age than are Entering Working Age
- Lack and cost of Child Care

Santa Clara County

- **28% more posted openings in April 2022 than April 2021 — half as many people looking for work**
- **LFPR: ~67% Jan 2020 to ~67% Dec 2021**
- **Local population is aging *and* declining**
- **Lack and cost of Child Care**

Gap in the Labor Force — Local Comparison (March 2022)

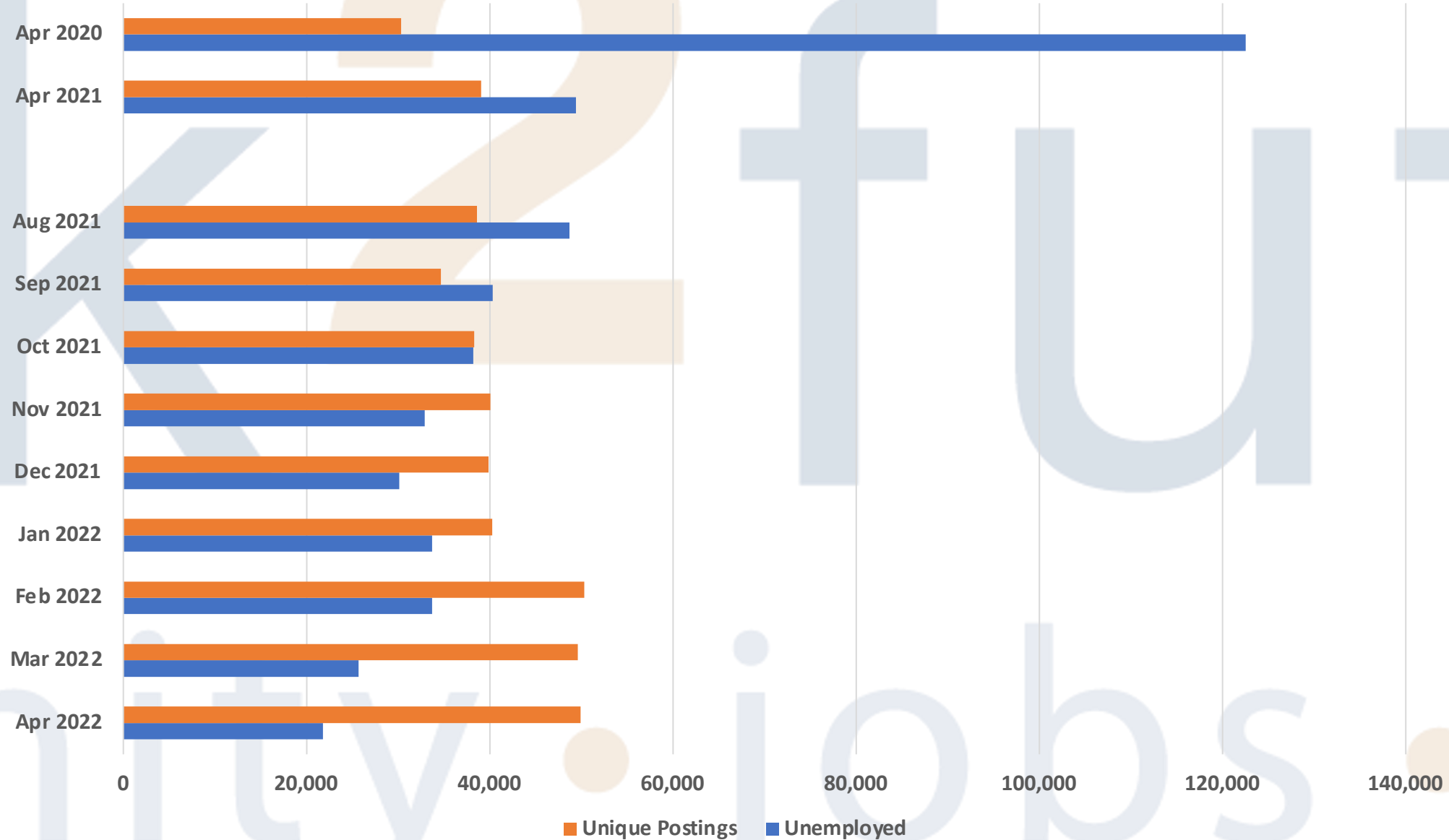
Nationwide

- 11.5 million openings — 6 million unemployed
- Labor Force Participation Rate: 63.4% Jan 2020 to 61.9% Dec 2021
- More Americans nearing Retirement Age than are Entering Working Age
- Lack and cost of Child Care

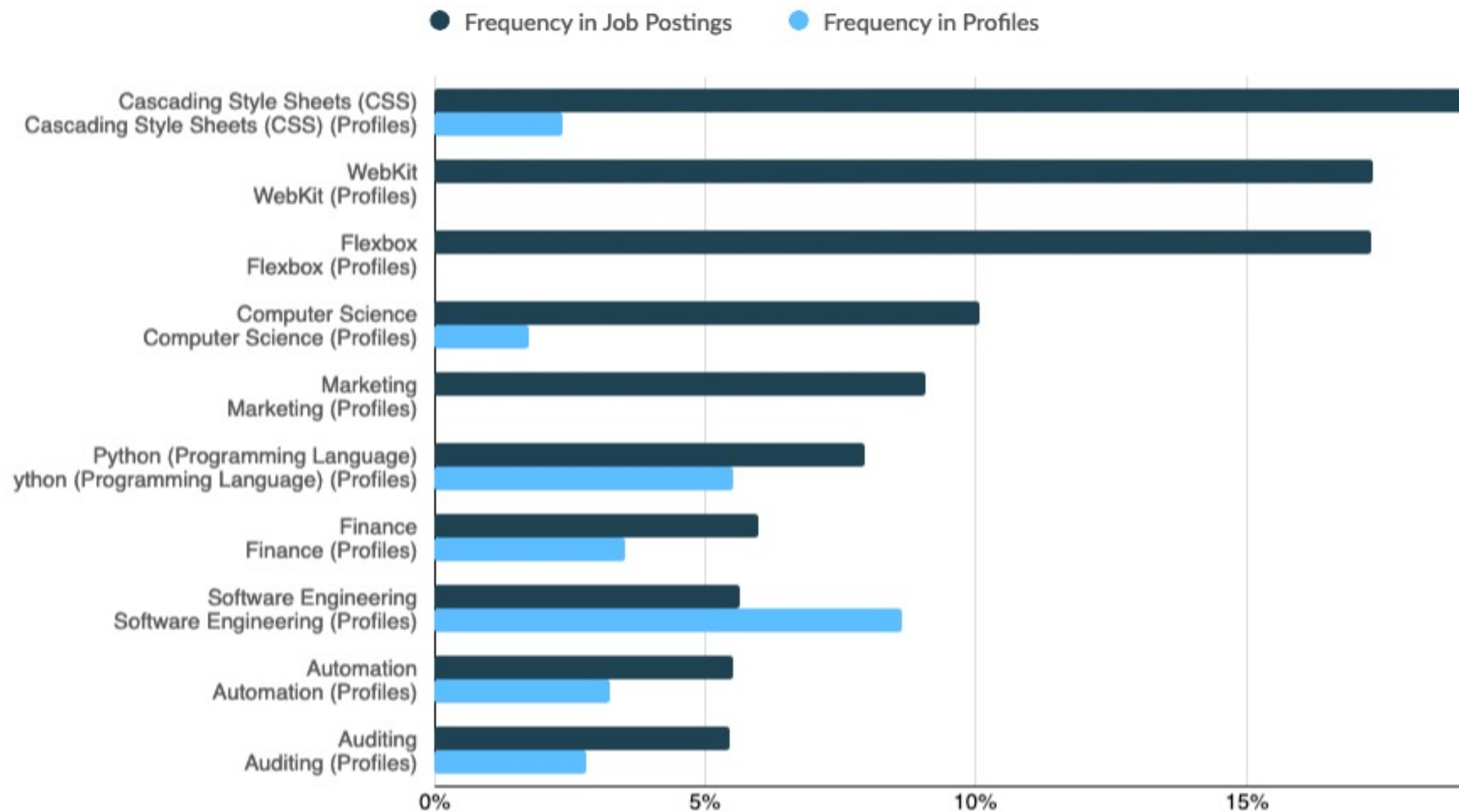
Santa Clara County

- **25% more posted openings in Mar 2022 than Mar 2021 — half as many people looking for work**
- LFPR: ~67% Jan 2020 to ~67% Dec 2021
- Local population is aging *and* declining
- Lack and cost of Child Care

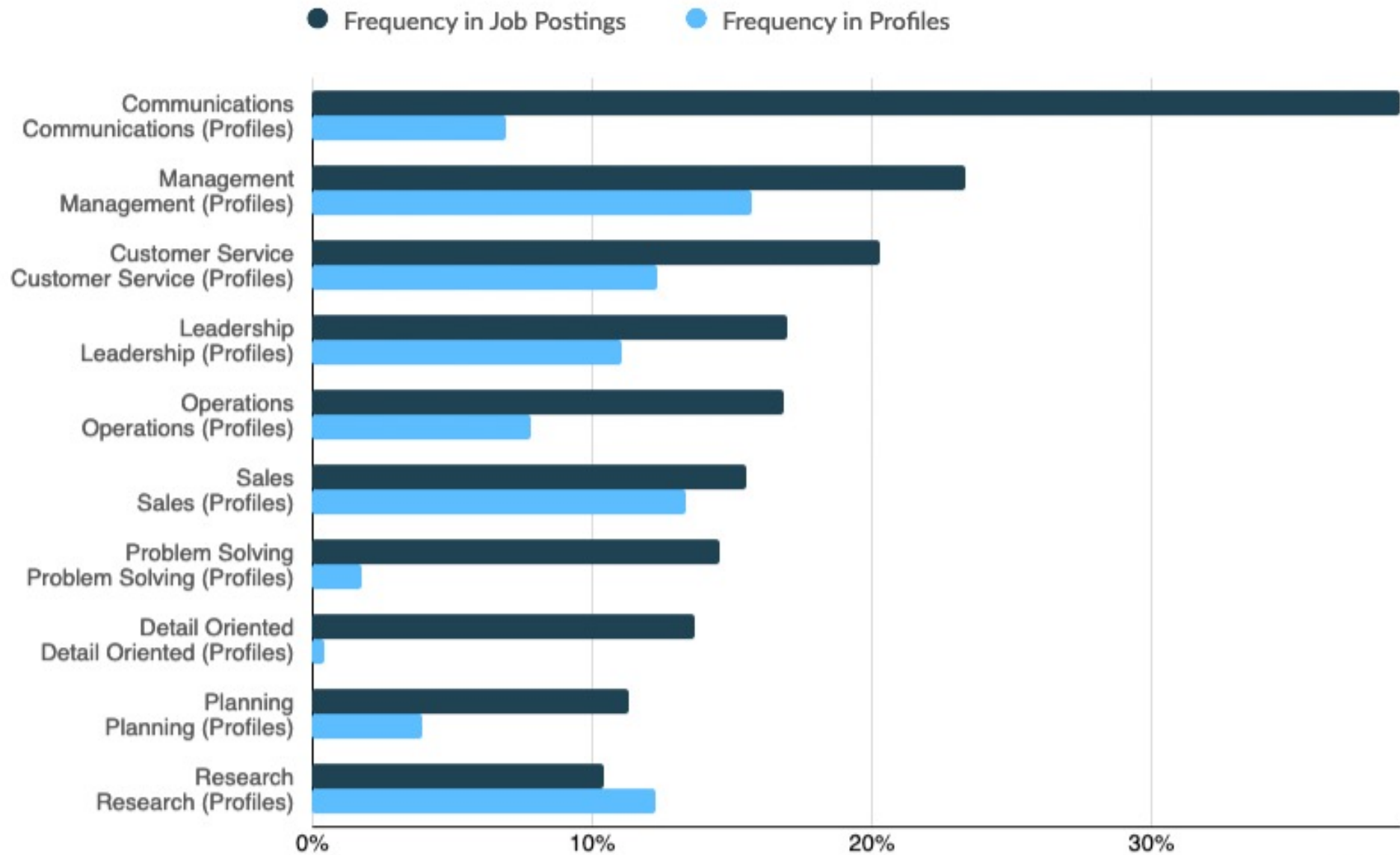
Labor Gap Illustration — Santa Clara County (unadjusted)



Top Specialized Skills



Top Common Skills



Santa Clara County Demographics

Overall Population

- Asian 36.3%
- White 31.5%
- **Hispanic/Latino 25.6%**
- Black/African American 2.4%
- **Female 49.3%**

In-Demand Quality Occupations

- Asian 49%
- White 35%
- **Hispanic/Latino 11%**
- Black/African American 3%
- **Female 37%**

County of Santa Clara Living Wage Rates

Fiscal Year 2021 - 2022 Rates
(July 1, 2021 - June 30, 2022)

WITH BOTH health and retirement
benefits

\$21.31

per hour

WITH EITHER health or retirement
benefits

\$23.31

per hour

WITHOUT health or retirement
benefits

\$25.31

per hour

Santa Clara County Demographics

Overall Population

• Asian	36.3%
• White	31.5%
• Hispanic/Latino	25.6%
• Black/African American	2.4%
• Female	49.3%

Occupations *Below* \$25.31/hr

• Asian	25%
• White	31%
• Hispanic/Latino	34%
• Black/African American	6%
• Female	54%

Santa Clara County Demographics

Overall Population

- Asian 36.3%
- White 31.5%
- **Hispanic/Latino 25.6%**
- Black/African American 2.4%
- **Female 49.3%**

Occupations at/above \$25.31/hr

- Asian 39%
- White 37%
- **Hispanic/Latino 16%**
- Black/African American 3%
- **Female 39%**

Fiscal Year 2021 - 2022 Rates
(July 1, 2021 - June 30, 2022)

WITH BOTH health and retirement
benefits

\$21.31

per hour

WITH EITHER health or retirement
benefits

\$23.31

per hour

WITHOUT health or retirement
benefits

\$25.31

per hour

Fiscal Year 2021 - 2022 Rates
(July 1, 2021 - June 30, 2022)

WITH BOTH health and retirement
benefits

\$21.31

per hour

WITH EITHER health or retirement
benefits

\$23.31

per hour

WITHOUT health or retirement
benefits

\$25.31

per hour

Fiscal Year 2022 - 2023 Rates
(July 1, 2022 - June 30, 2023)

WITH BOTH health and retirement
benefits

\$22.96

per hour

WITH EITHER health or retirement
benefits

\$24.96

per hour

WITHOUT health or retirement
benefits

\$26.96

per hour

Santa Clara County Demographics

Overall Population

- Asian 36.3%
- White 31.5%
- **Hispanic/Latino 25.6%**
- Black/African American 2.4%
- **Female 49.3%**

In-Demand Quality Occupations

- Asian 49%
- White 35%
- **Hispanic/Latino 11%**
- Black/African American 3%
- **Female 37%**