

April 2022 Labor Market Summary

San Jose-Sunnyvale-Santa Clara Metropolitan Statistical Area
Santa Clara County + San Benito County

Unemployment Rates

April 2022 (prelim)

MSA: 2.5%

County: 2.1%

State: 3.8%

USA: 3.3%

March 2022

MSA: 3.0% (revised)

County: 2.5%

State: 4.2%

USA: 3.8%

Between March 2022 and April 2022

MSA Employment Rose 9,300 to 1,154,000

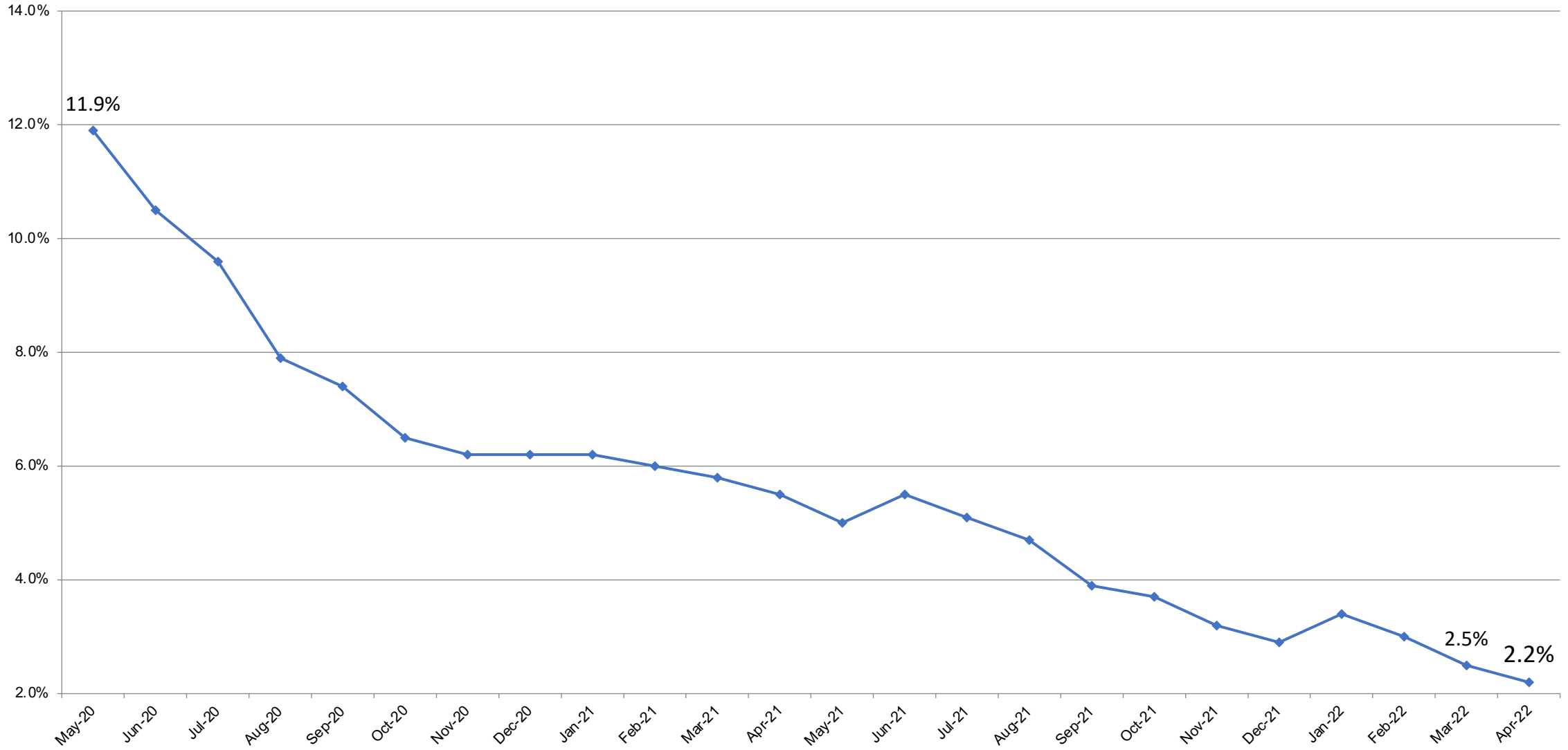
- Leisure and Hospitality up 4,400
 - Food Services and Drinking Places — 3,200
- Professional & Business Services up 1,300 net (professional, scientific and technical services)
- Manufacturing up 1,100 (durable goods)
- Government, Construction, Financial Activities also up

April to April: MSA added 62,400 Jobs

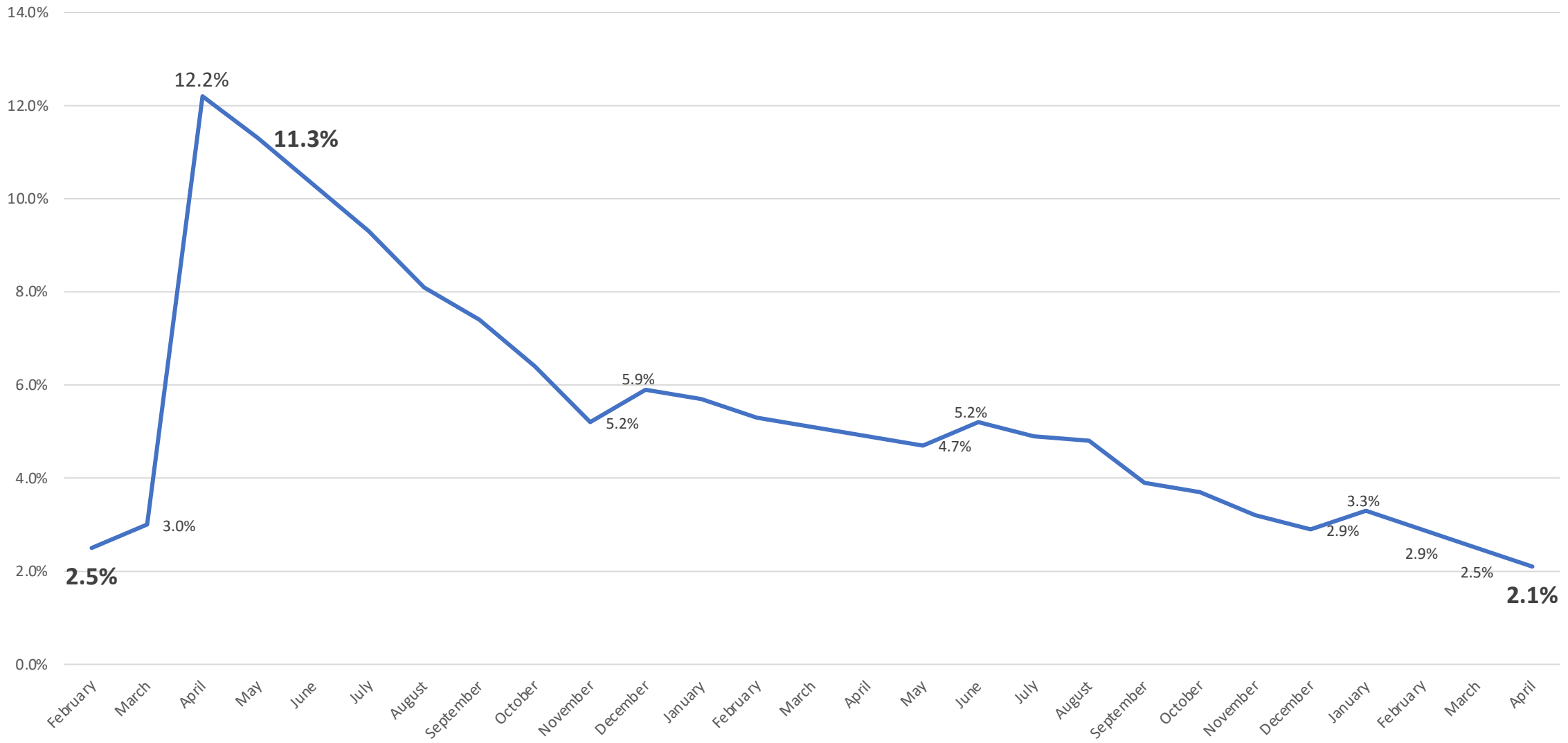
5.7% Increase

- Leisure and Hospitality up 24,500
 - Food Services and Drinking Places: 17,500
- Professional and Business Services up 12,600
 - Professional, Scientific, and Technical Services: 10,100
- Educational and Health Services up 6,500
 - Healthcare and Social Assistance: 4,300
- Manufacturing up 5,600
- Information up 4,300
- Transportation & Utilities—3,000; Construction—2,600

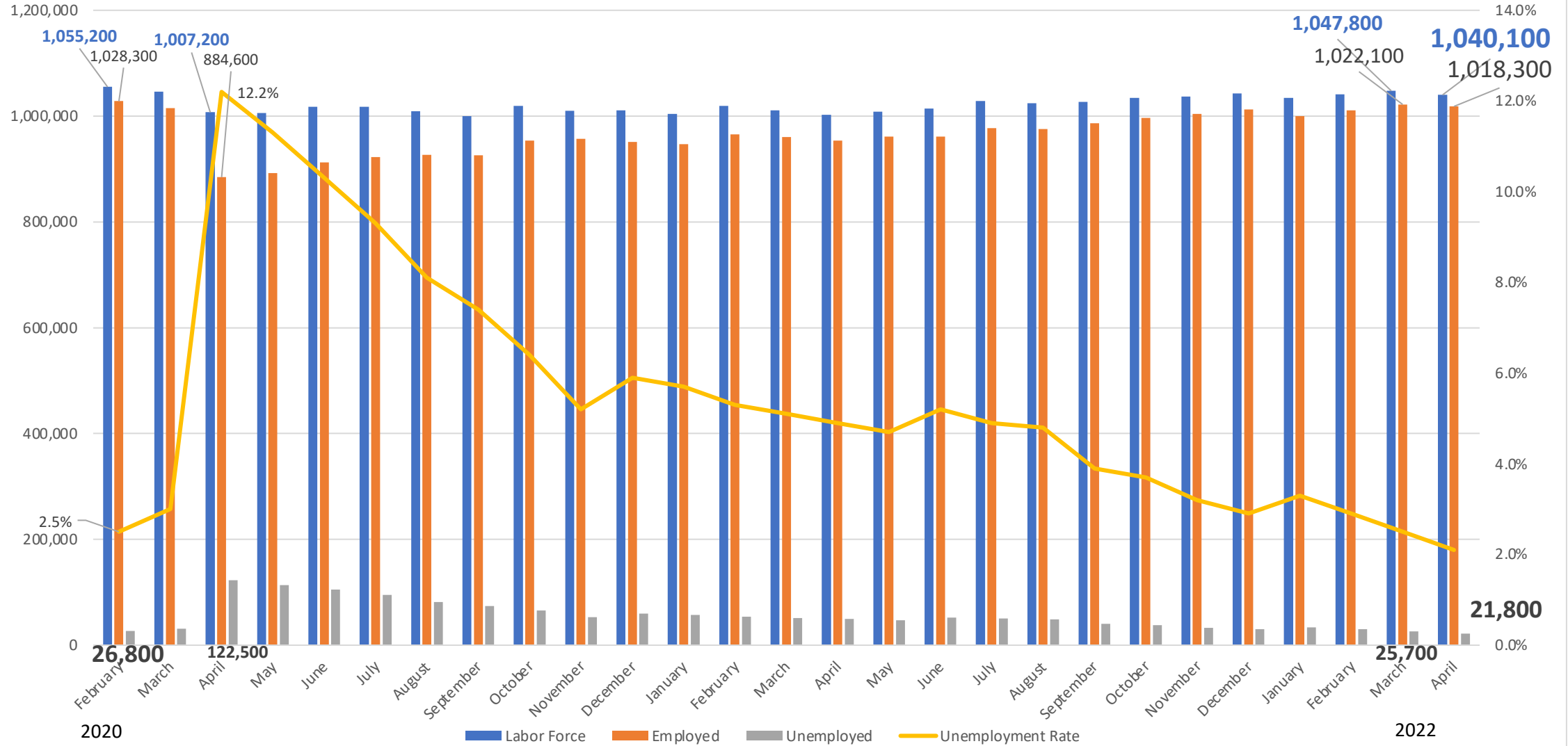
MSA Unemployment Rate Historical Trend



Santa Clara County Unemployment Rate



Labor Force in Santa Clara County



Challenges in the Labor Force (April 2022)

Nationwide

- 11.4 million openings — 5.5 million unemployed
- Labor Force Participation Rate: 63.4% Jan 2020 to 63.2% April 2022
- More Americans nearing Retirement Age than are Entering Working Age
- Lack and cost of Child Care

Number of unemployed persons per job opening, seasonally adjusted

Click and drag within the chart to zoom in on time periods



Hover over chart to view data.

Note: Shaded area represents recession, as determined by the National Bureau of Economic Research.

Source: U.S. Bureau of Labor Statistics.



Challenges in the Labor Force — Local Comparison

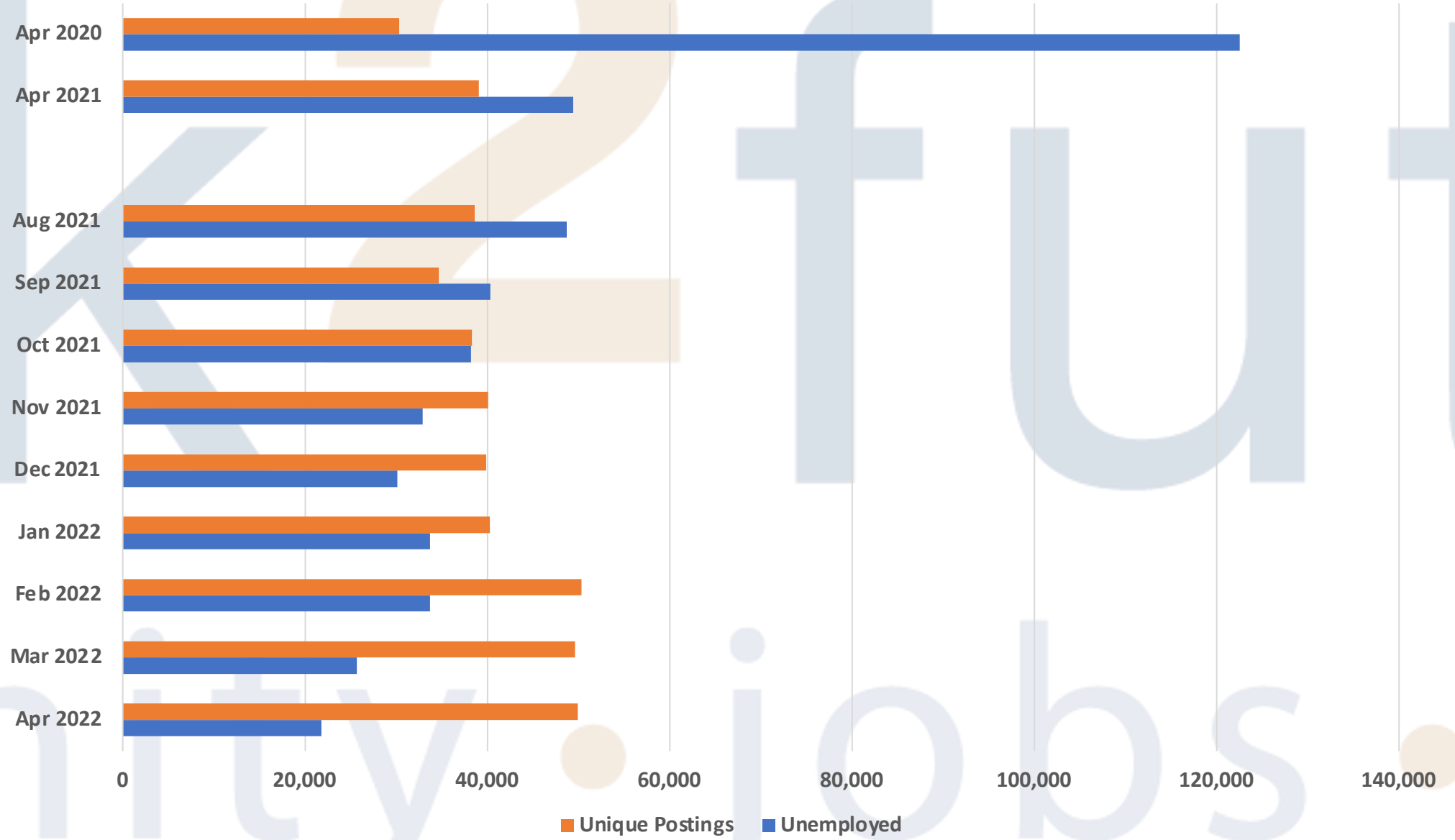
Nationwide

- 11.4 million openings — 5.5 million unemployed
- Labor Force Participation Rate: 63.4% Jan 2020 to 63.2% Apr 2022
- More Americans nearing Retirement Age than are Entering Working Age
- Lack and cost of Child Care

Santa Clara County

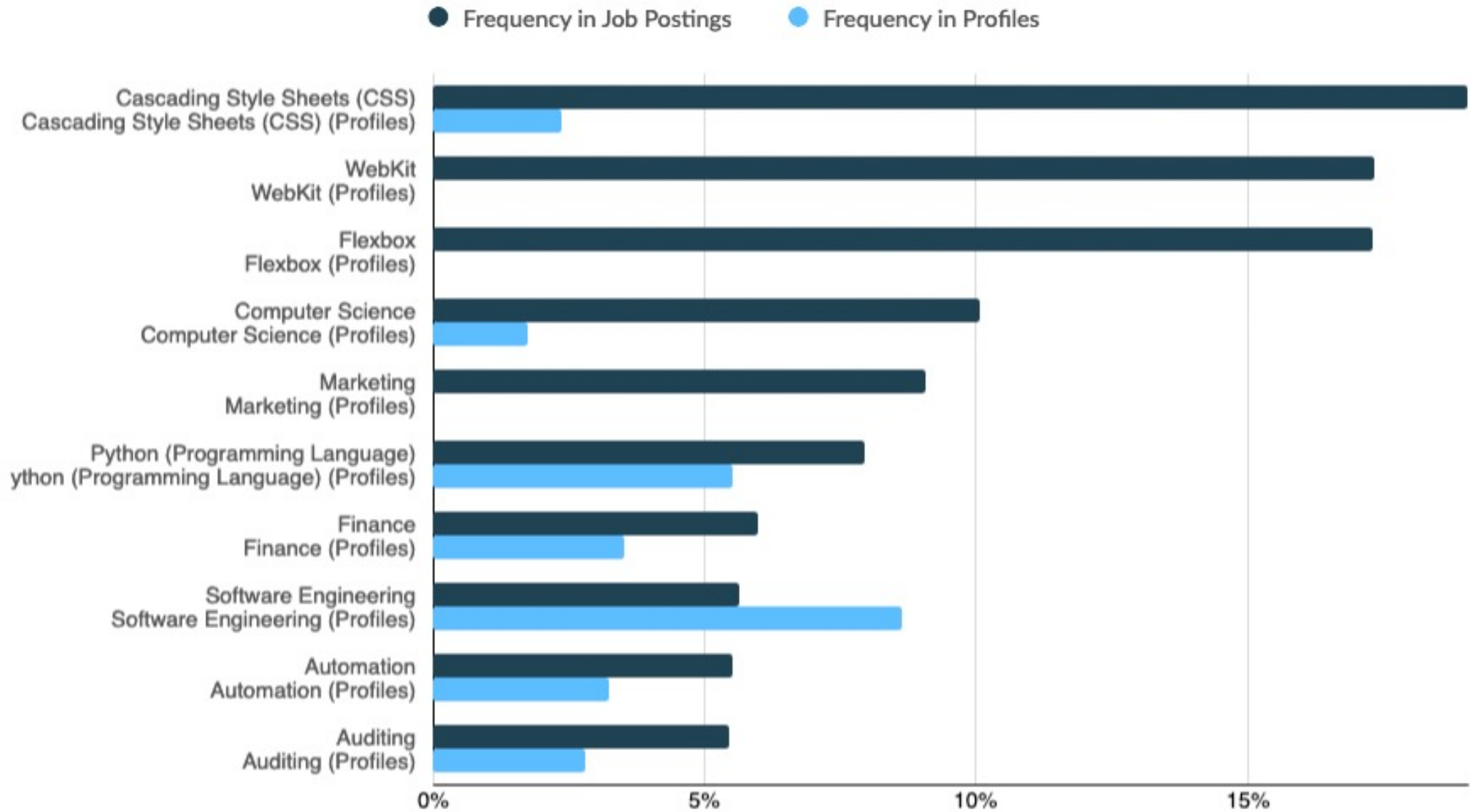
- **28% more posted openings in April 2022 than April 2021 — half as many people looking for work**
- **LFPR: ~67% Jan 2020 to ~67% Dec 2021**
- **Local population is aging *and* declining**
- **Lack and cost of Child Care**

Labor Gap Illustration — Santa Clara County (unadjusted)



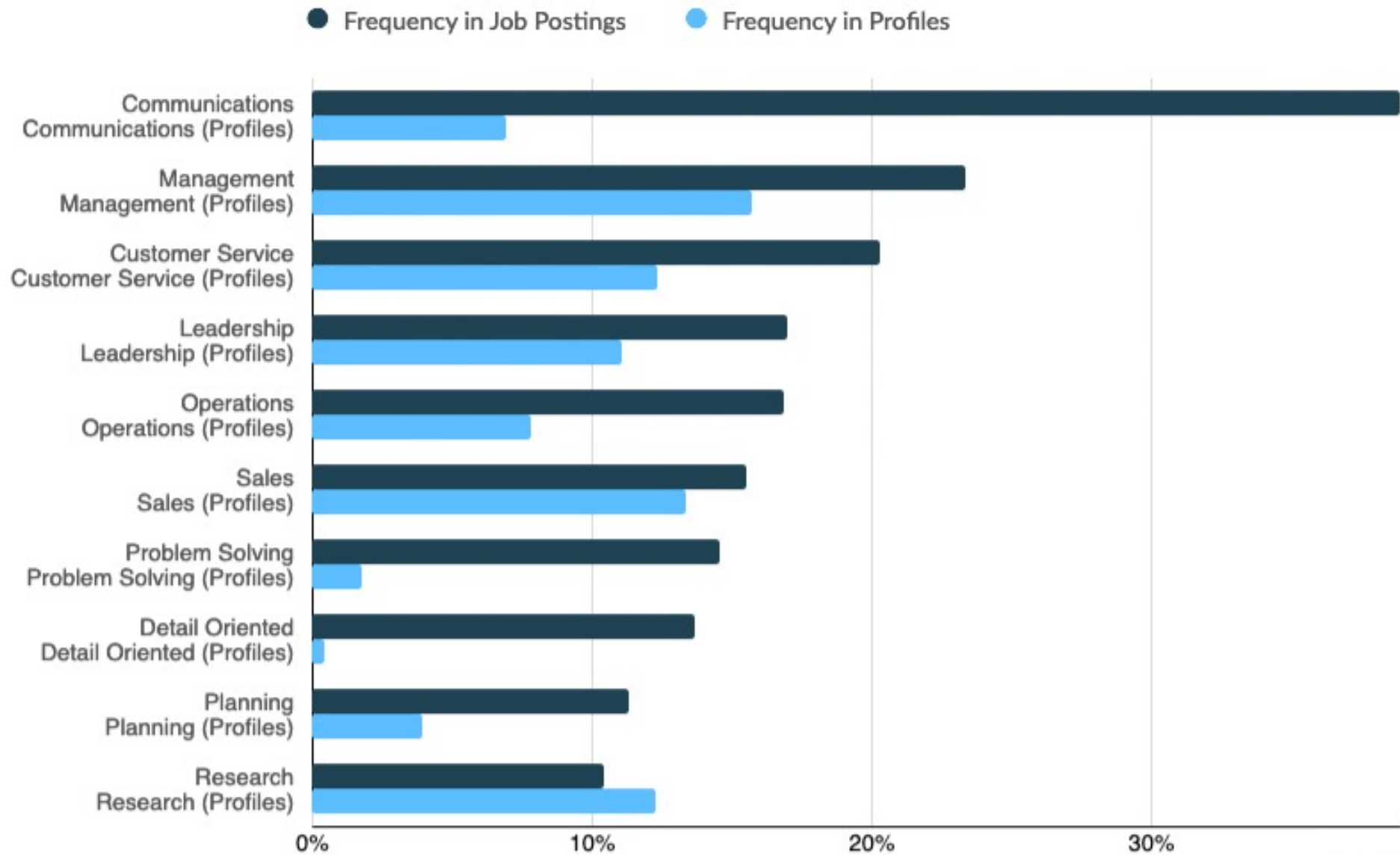
Source: Emsi

Top Specialized Skills



Source: Emsi

Top Common Skills



Source: Emsi

Santa Clara County Demographics

Overall Population

- Asian 36.3%
- White 31.5%
- **Hispanic/Latino 25.6%**
- Black/African American 2.4%
- **Female 49.3%**

In-Demand Quality Occupations

- Asian 49%
- White 35%
- **Hispanic/Latino 11%**
- Black/African American 3%
- **Female 37%**

Source: Emsi

County of Santa Clara Living Wage Rates

Fiscal Year 2021 - 2022 Rates
(July 1, 2021 - June 30, 2022)

WITH BOTH health and
retirement benefits

\$21.31

per hour

WITH EITHER health or
retirement benefits

\$23.31

per hour

WITHOUT health or retirement
benefits

\$25.31

per hour

Santa Clara County Demographics

Overall Population

- Asian 36.3%
- White 31.5%
- Hispanic/Latino 25.6%
- Black/African American 2.4%
- Female 49.3%

Occupations *Below* \$25.31/hr

- Asian 25%
- White 31%
- Hispanic/Latino 34%
- Black/African American 6%
- Female 54%

Source: Emsi

Santa Clara County Demographics

Overall Population

- Asian 36.3%
- White 31.5%
- **Hispanic/Latino 25.6%**
- Black/African American 2.4%
- **Female 49.3%**

Occupations at/above \$25.31/hr

- Asian 39%
- White 37%
- **Hispanic/Latino 16%**
- Black/African American 3%
- **Female 39%**

Source: Emsi

Fiscal Year 2021 - 2022 Rates
(July 1, 2021 - June 30, 2022)

WITH BOTH health and
retirement benefits

\$21.31

per hour

WITH EITHER health or
retirement benefits

\$23.31

per hour

WITHOUT health or retirement
benefits

\$25.31

per hour

Fiscal Year 2021 - 2022 Rates
(July 1, 2021 - June 30, 2022)

WITH BOTH health and retirement benefits

\$21.31

per hour

WITH EITHER health or retirement benefits

\$23.31

per hour

WITHOUT health or retirement benefits

\$25.31

per hour

Fiscal Year 2022 - 2023 Rates
(July 1, 2022 - June 30, 2023)

WITH BOTH health and retirement benefits

\$22.96

per hour

WITH EITHER health or retirement benefits

\$24.96

per hour

WITHOUT health or retirement benefits

\$26.96

per hour

At Median Wage of \$26.96 per hour

Overall Population

- Asian 36.3%
- White 31.5%
- **Hispanic/Latino 25.6%**
- Black/African American 2.4%
- **Female 49.3%**

In-Demand Quality Occupations

- Asian 51% (49)
- White 33% (35)
- **Hispanic/Latino 10% (11)**
- Black/African American 3%
- **Female 37%**

Source: Emsi

At Median Wage of \$26.96 per hour

Overall Population

- Asian 36.3%
- White 31.5%
- Hispanic/Latino 25.6%
- Black/African American 2.4%
- Female 49.3%

Occupations *Below* \$26.96/hr

- Asian 25%
- White 32% (31)
- **Hispanic/Latino 34%**
- **Black/African American 6%**
- **Female 55% (54)**

Source: Emsi

At Median Wage of \$26.96 per hour

Overall Population

- Asian 36.3%
- White 31.5%
- **Hispanic/Latino 25.6%**
- Black/African American 2.4%
- **Female 49.3%**

Occupations at/above \$26.96/hr

- Asian 40% (39)
- White 39% (37)
- **Hispanic/Latino 15% (16)**
- Black/African American 3%
- **Female 38% (39)**

Source: Emsi

Inflation

- Real average hourly earnings decreased 0.6% from April to May
 - 0.3% increase in average hourly earnings for all employees
 - 1.0% increase in the CPI for All Urban Consumers
- Real average hourly earnings decreased 3.0% from May 2021 to May 2022

