

Labor Market Summary

San Jose-Sunnyvale-Santa Clara Metropolitan Statistical Area

Santa Clara County + San Benito County

Unemployment Rates

January 2022 (prelim)

MSA: 3.4%

County: 3.3%

State: 5.5%

USA: 4.4%

December 2021

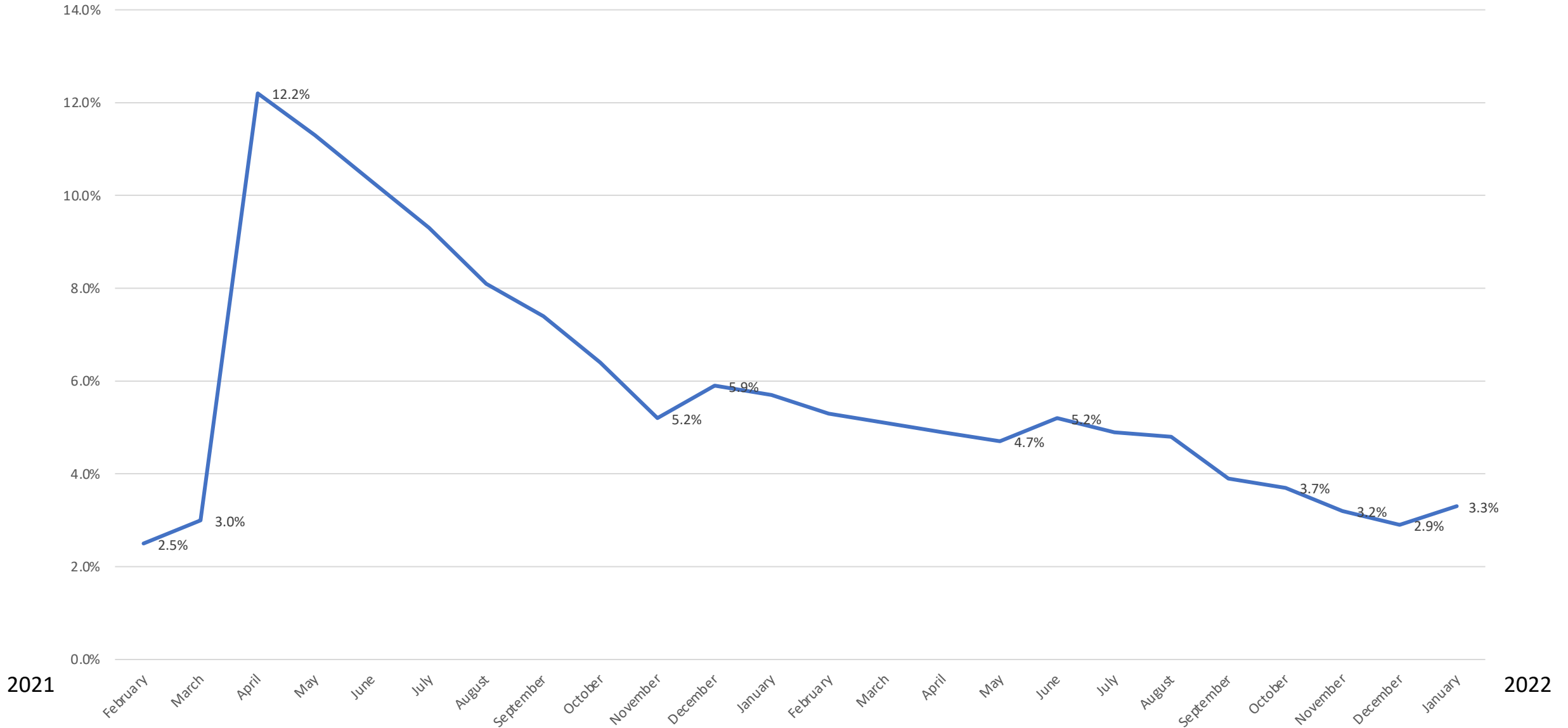
MSA: 2.9% (revised)

County: 2.9%

State: 5.0%

USA: 3.7%

Santa Clara County Unemployment



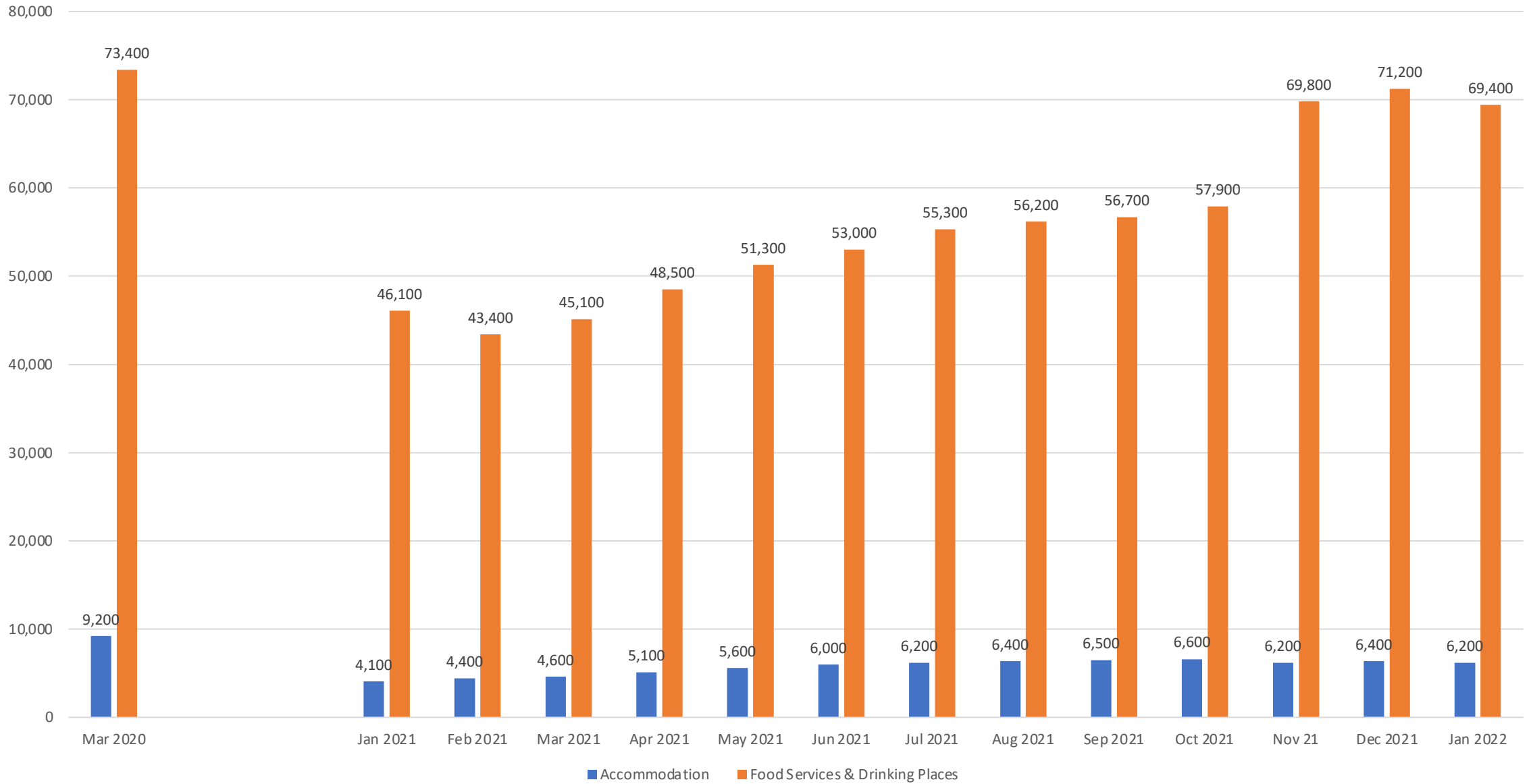
MSA Lost Estimated 18,500 Jobs between December 2021 and January 2022

- Trade, Transportation, and Utilities: -4500
 - Retail Trade: -2,300
- Administrative Support & Waste Management: -3,900
- Leisure and Hospitality: -2,800
 - Food Service and Drinking Places: -1,800
- Government: -1800
 - Local Govt Educational Services: -1,100

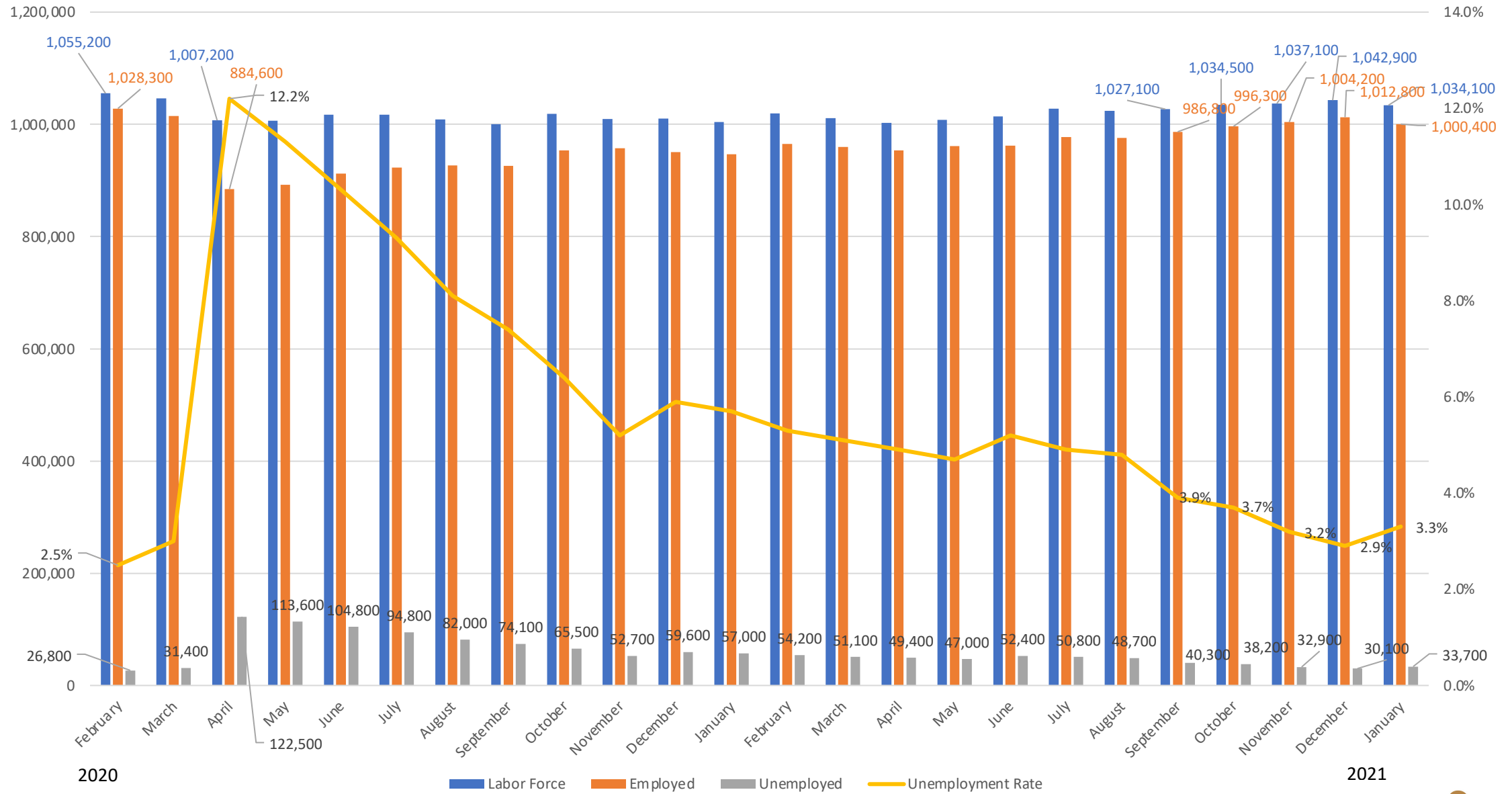
MSA added 71,500 Jobs for the Year—6.8% Increase

- Leisure and Hospitality: 33,200
 - Food Services and Drinking Places: 23,300 (71%)
- Professional and Business Services: 12,000
 - Professional, Scientific, and Technical Services: 9,500
- Private Educational and Health Services: 9,100
 - Healthcare and Social Assistance: 6,100
 - Educational Services: 3,000
- Manufacturing: 5,900
- Information: 3,300

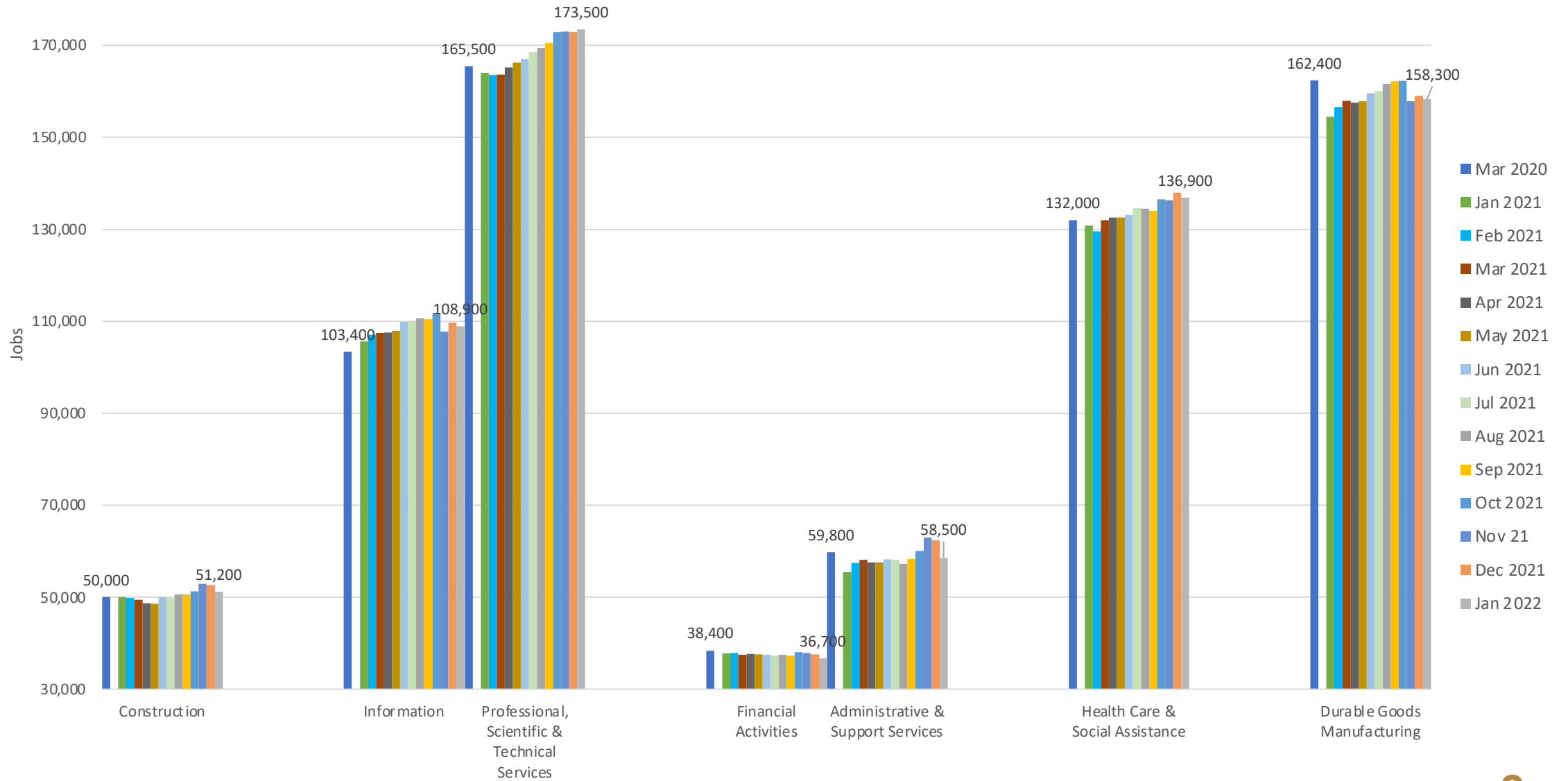
Leisure & Hospitality



Labor Force in Santa Clara County



Priority Sector Employment Mar 2020 + January 2021–January 2022



In-Demand Quality Occupations

- Four-year period
- 100 openings a year
- 5% growth
- Median Hourly Earnings:
\$25.31 — County Living Wage
w/o retirement or health

In-Demand Quality Occupations

- Four-year period
- 100 openings a year
- 5% growth
- Median Hourly Earnings: \$25.31 — County Living Wage w/o retirement or health
- 2021–24
- 53 occupations
- Advertising Sales Agents to Welders, Cutters, Solderers, and Braziers
- Average hourly earnings: \$64.39
- 11% Hispanic/Latino

In-Demand Quality Occupations

Advertising Sales Agents

Child, Family, and School Social Workers

Civil Engineers

Clinical Laboratory Technologists and Technicians

Computer and Information Research Scientists

Computer and Information Systems Managers

Computer Network Architects

Computer Network Support Specialists

Computer Systems Analysts

Computer User Support Specialists

Construction Managers

Data Scientists and Mathematical Science Occupations, All Other

Database Administrators and Architects

Editors

Education Administrators, Postsecondary

Electricians

Financial Managers

Healthcare Social Workers

Industrial Machinery Mechanics

Information Security Analysts

Librarians and Media Collections Specialists

Library Technicians

Licensed Practical and Licensed Vocational Nurses

Logisticians

Management Analysts

Market Research Analysts and Marketing Specialists

Marriage and Family Therapists

Medical and Health Services Managers

Medical Dosimetrists, Medical Records Specialists, and Health Technologists and Technicians, All Other

Medical Scientists, Except Epidemiologists

Network and Computer Systems Administrators

News Analysts, Reporters, and Journalists

Nurse Practitioners

Operations Research Analysts

Personal Financial Advisors

Plumbers, Pipefitters, and Steamfitters

Postsecondary Teachers

Producers and Directors

Public Relations Specialists

Real Estate Sales Agents

Registered Nurses

Sales Representatives of Services, Except Advertising, Insurance, Financial Services, and Travel

Securities, Commodities, and Financial Services Sales Agents

Security and Fire Alarm Systems Installers

Social and Community Service Managers

Social and Human Service Assistants

Software Developers and Software Quality Assurance Analysts and Testers

Special Effects Artists and Animators

Substance Abuse, Behavioral Disorder, and Mental Health Counselors

Technical Writers

Training and Development Specialists

Web Developers and Digital Interface Designers

Welders, Cutters, Solderers, and Brazers

Current Year Total Diversity % of Occupation	Current Year Hispanic or Latino % of Occupation	Current Year White % of Occupation	Current Year Black or African American % of Occupation	Current Year American Indian or Alaska Native % of Occupation	Current Year Asian % of Occupation	Current Year Native Hawaiian or Other Pacific Islander % of Occupation	Current Year Two or More Races % of Occupation
65%	26%	35%	8%	Insf. Data	27%	1%	3%
66%	26%	34%	10%	Insf. Data	24%	Insf. Data	4%
73%	34%	27%	10%	1%	25%	1%	3%
48%	11%	52%	3%	Insf. Data	31%	Insf. Data	2%
43%	8%	57%	3%	Insf. Data	29%	Insf. Data	3%
46%	17%	54%	3%	Insf. Data	23%	Insf. Data	2%
65%	11%	35%	3%	0%	49%	0%	2%

Santa Clara County Demographics

Overall Population

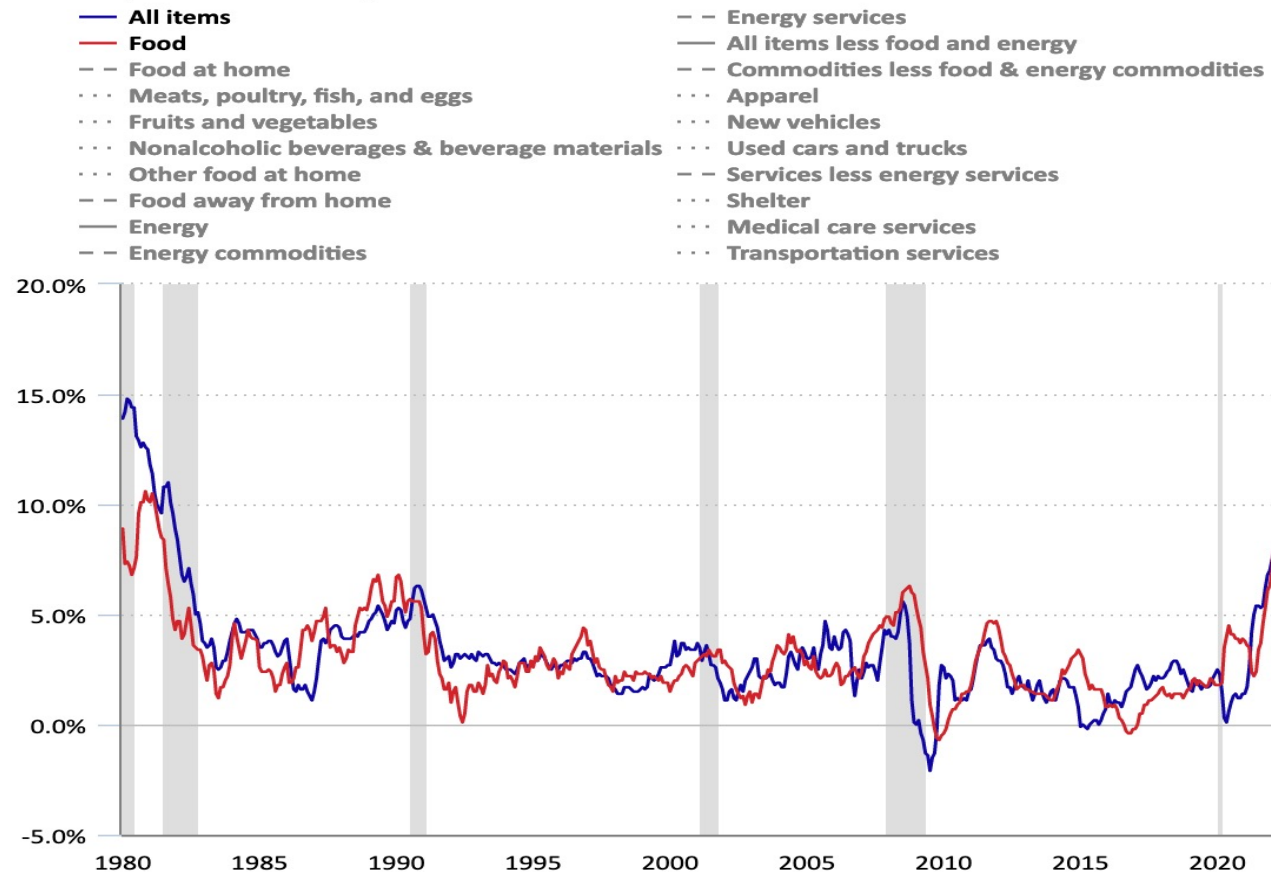
- Asian 38.9%
- White 30.6%
- Hispanic/Latino 25.2%
- Black/African American 2.8%

In-Demand Quality Occupations

- Asian 49%
- White 35%
- Hispanic/Latino 11%
- Black/African American 3%

Consumer Price Index rose 7.9% from February 2021 to February 2022, up from 7.5% in January

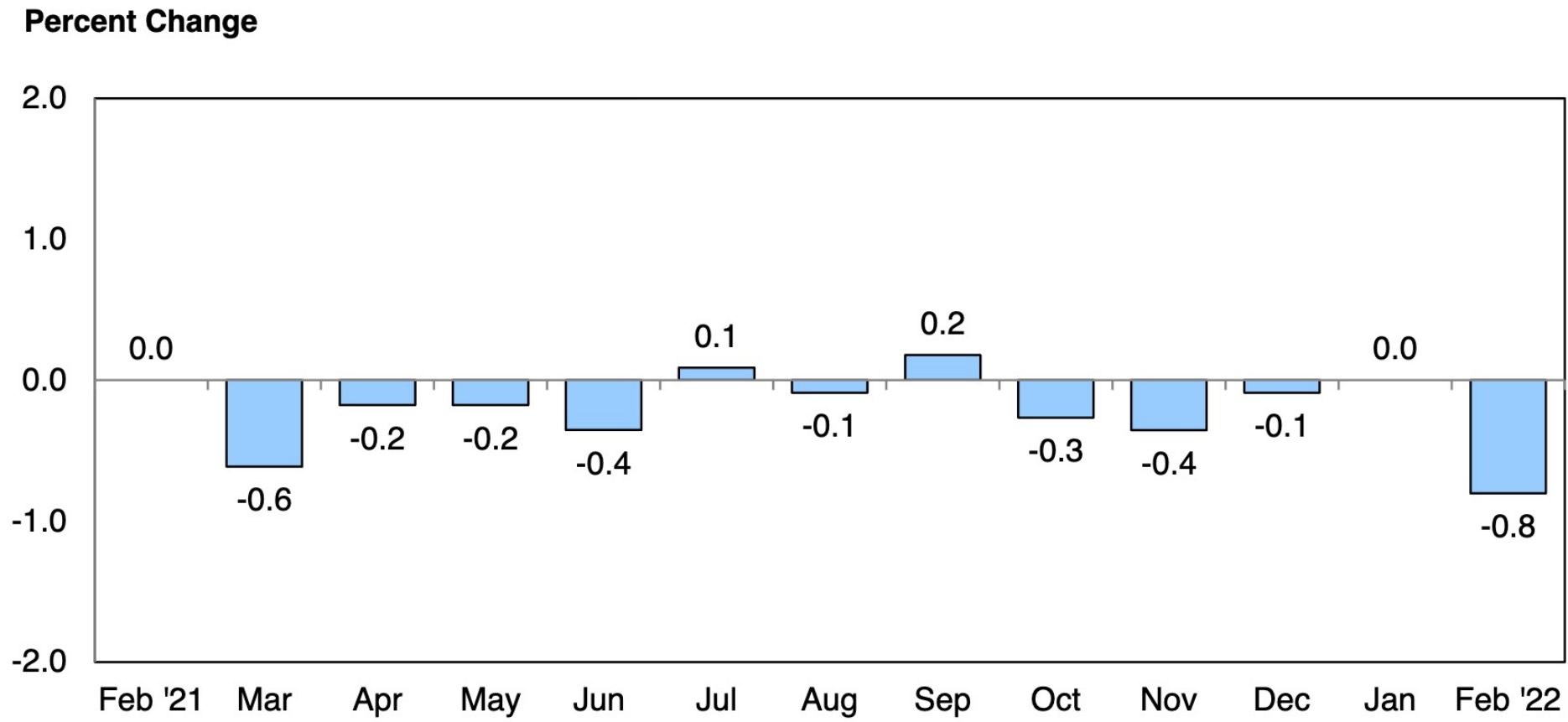
12-month percentage change, Consumer Price Index, selected categories, January 1980–February 2022



Click legend items to change data display. Hover over chart to view data.
Shaded areas represent recessions as determined by the National Bureau of Economic Research.
Source: U.S. Bureau of Labor Statistics.

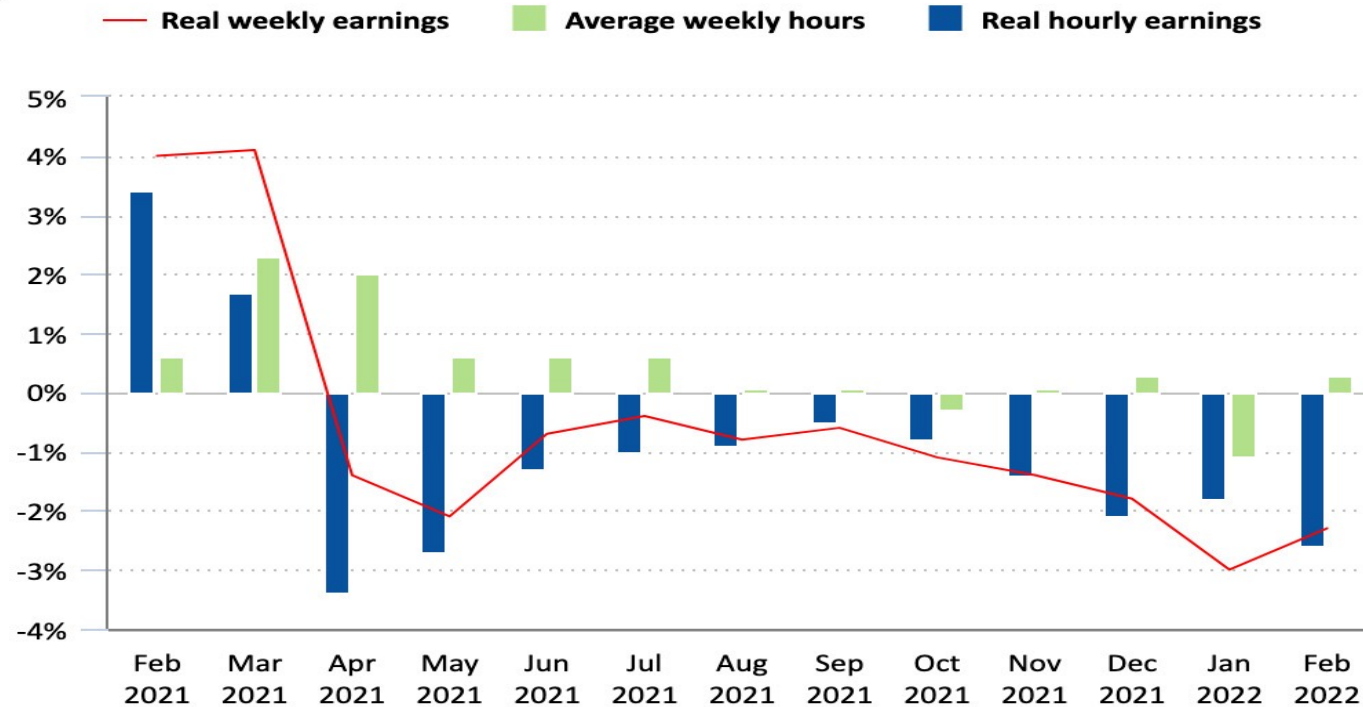


Real average hourly earnings decreased 0.8% from January 2022 to February 2022



Real average hourly earnings decreased 2.6% from February 2021 to February 2022

12-month percent changes in real average hourly and weekly earnings and average weekly hours for all private employees, February 2021 to February 2022



Click legend items to change data display. Hover over chart to view data.
Source: U.S. Bureau of Labor Statistics.



Santa Clara County Demographics

Overall Population

- Asian 38.9%
- White 30.6%
- Hispanic/Latino 25.2%
- Black/African American 2.8%

In-Demand Quality Occupations

- Asian 49%
- White 35%
- Hispanic/Latino 11%
- Black/African American 3%

Santa Clara County Demographics

Overall Population

- Asian 38.9%
- White 30.6%
- Hispanic/Latino 25.2%
- Black/African American 2.8%

Occupations at/above Living Wage

- Asian 39%
- White 37%
- Hispanic/Latino 16%
- Black/African American 3%