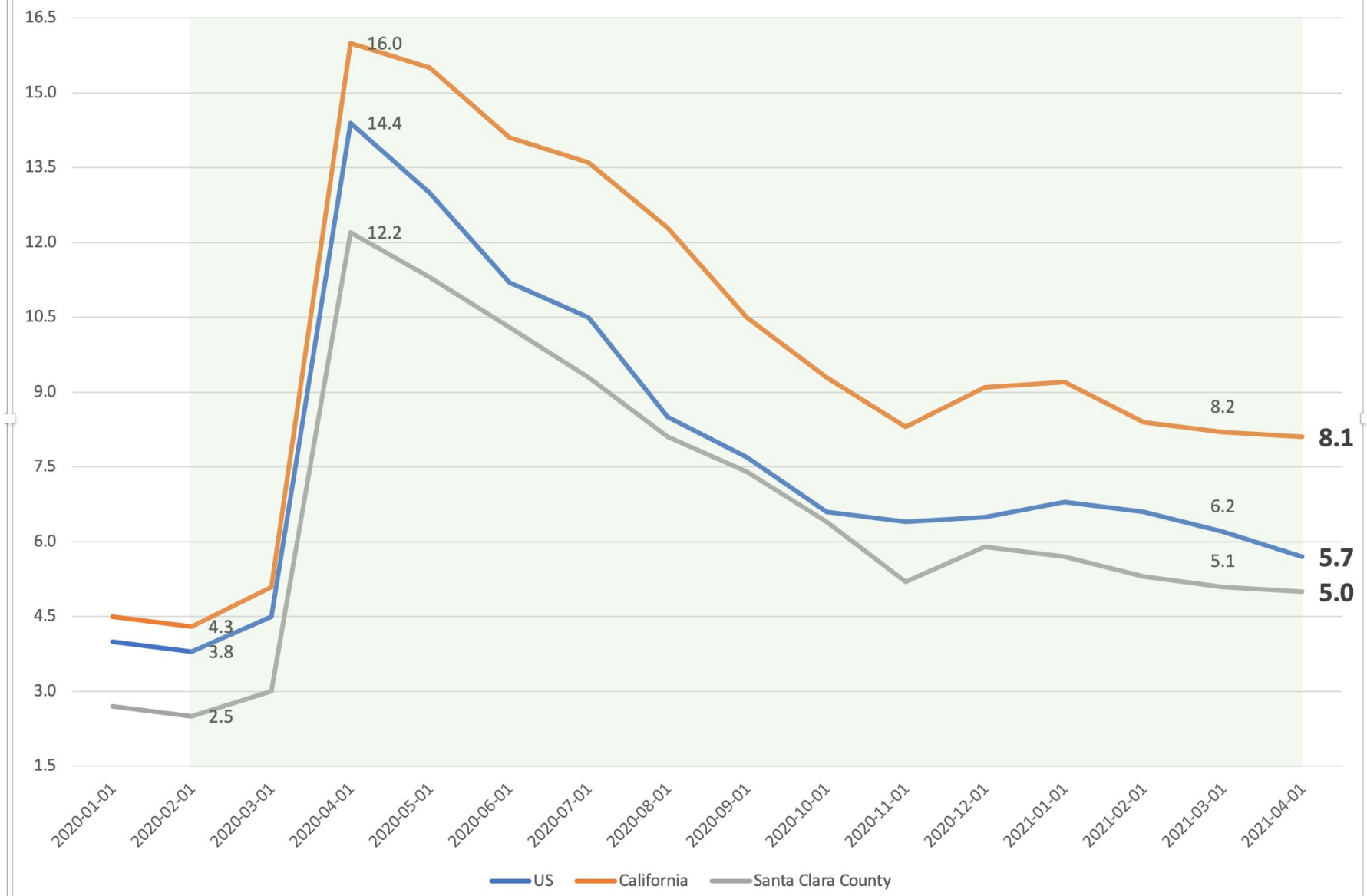


Labor Market Summary

April 2021

Monthly unemployment rate snapshots show continued but slowing improvement locally, with rates remaining about twice above pre-pandemic levels

Comparative Unemployment Rates



Rates are in percent

What's Changed Since April 2020?

April 2021

	Labor Force	Employment	Unemployment	Unemployment Rate	Year-Over-Year Change Labor Force	Year-Over-Year Change Employment	Year-Over-Year Change Unemployment
Santa Clara County	1,003,800	953,900	49,900	5.0%	-3,400	69,300	-72,600
San Jose city	529,900	500,600	29,300	5.5%	-11,900	36,300	-48,200
Gilroy	30,500	25,700	4,700	15.6%	100	-3,800	3,800

HOWEVER ...

The improvement in unemployment rates is due partly to people dropping out of the labor force. This is especially true at the state level and it is also true in San Jose.

See Cal Matters newsletter, Whatmatters

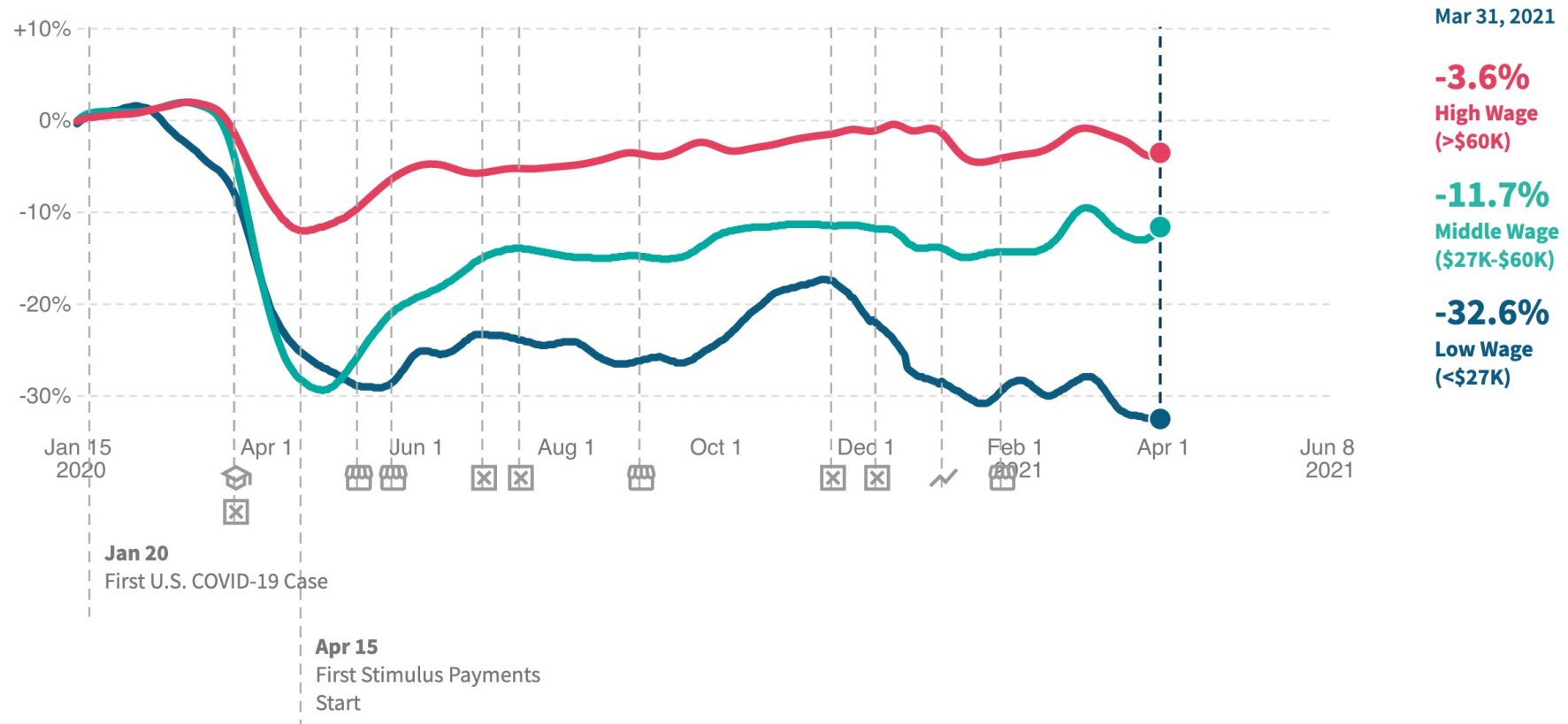
<https://calmatters.org/newsletters/whatmatters/2021/04/california-unemployment-rate-workforce/>

An Uneven Recovery

- Low Wage jobs took a big hit and have been slowest to recover. Middle Wage jobs took an equally big hit but have recovered much faster. High Wage jobs took a much smaller hit and have nearly recovered.
- Within two weeks of Stay-at-Home orders, weekly initial unemployment assistance claims in Santa Clara County rose to extraordinary levels across most sectors but especially Leisure & Hospitality, Construction, Health Care & Social Assistance, Manufacturing, and Retail Trade. Initial claims in the Leisure & Hospitality and the Retail Trade sectors remain many orders of magnitude above pre-pandemic levels. Health Care & Social Assistance also remains substantially elevated.

Percent Change in Employment*

In **Santa Clara**, as of **March 31 2021**, employment rates among workers in the bottom wage quartile **decreased** by **32.6%** compared to January 2020 (not seasonally adjusted).

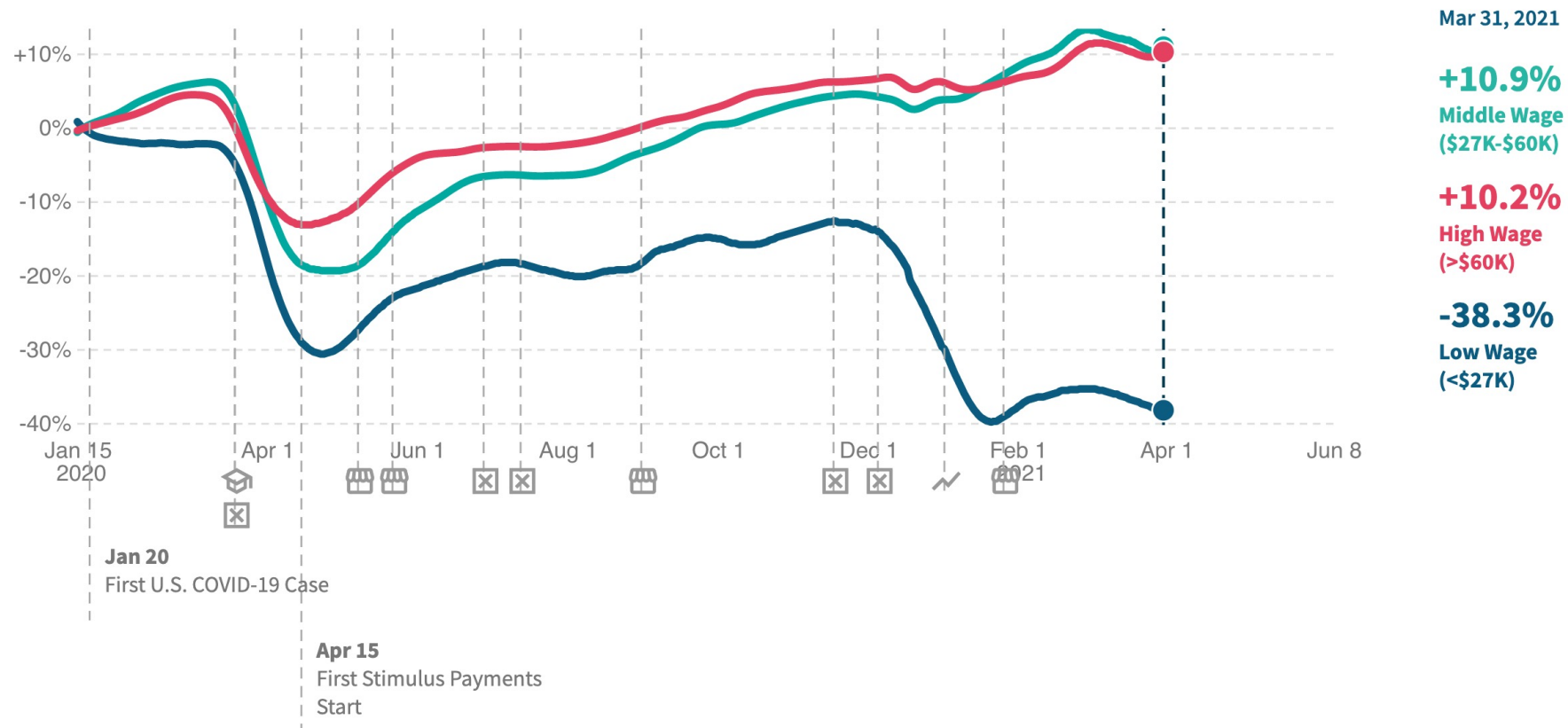


*Change in employment rates (not seasonally adjusted), indexed to January 4-31, 2020. This series is based on payroll data from Paychex and Intuit, worker-level data on employment and earnings from Earnin, and timesheet data from Kronos. The dotted line is a prediction of employment rates based on Kronos and Paychex data.

last updated: **June 04, 2021** next update expected: **June 11, 2021**

Percent Change in Employment*

In **California**, as of **March 31, 2021**, employment rates among workers in the bottom wage quartile **decreased** by **38.3%** compared to January 2020 (not seasonally adjusted).



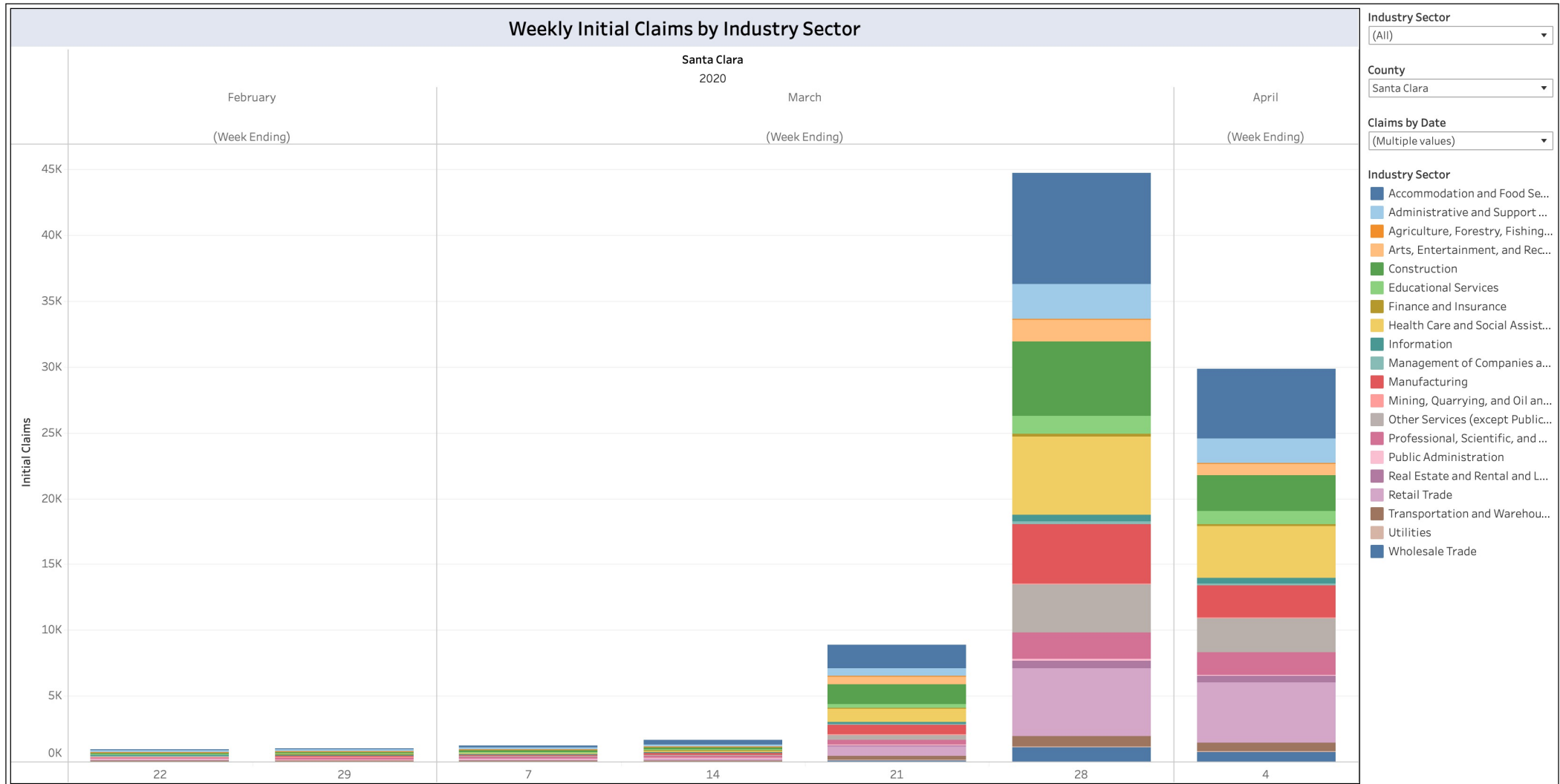
data source: **Earnin, Intuit, Kronos, Paychex**

*Change in employment rates (not seasonally adjusted), indexed to January 4-31, 2020. This series is based on payroll data from Paychex and Intuit, worker-level data on employment and earnings from Earnin, and timesheet data from Kronos. The dotted line is a prediction of employment rates based on Kronos and Paychex data.

last updated: **June 04, 2021** next update expected: **June 11, 2021**

California Unemployment Industry & Demographics Data Dashboard

(Dashboard appears better when viewed in full screen mode. Click the icon in the bottom right-hand corner of screen next to download icon.)



California Unemployment Industry & Demographics Data Dashboard

(Dashboard appears better when viewed in full screen mode. Click the icon in the bottom right-hand corner of screen next to download icon.)

<

About This Tool

County Claims

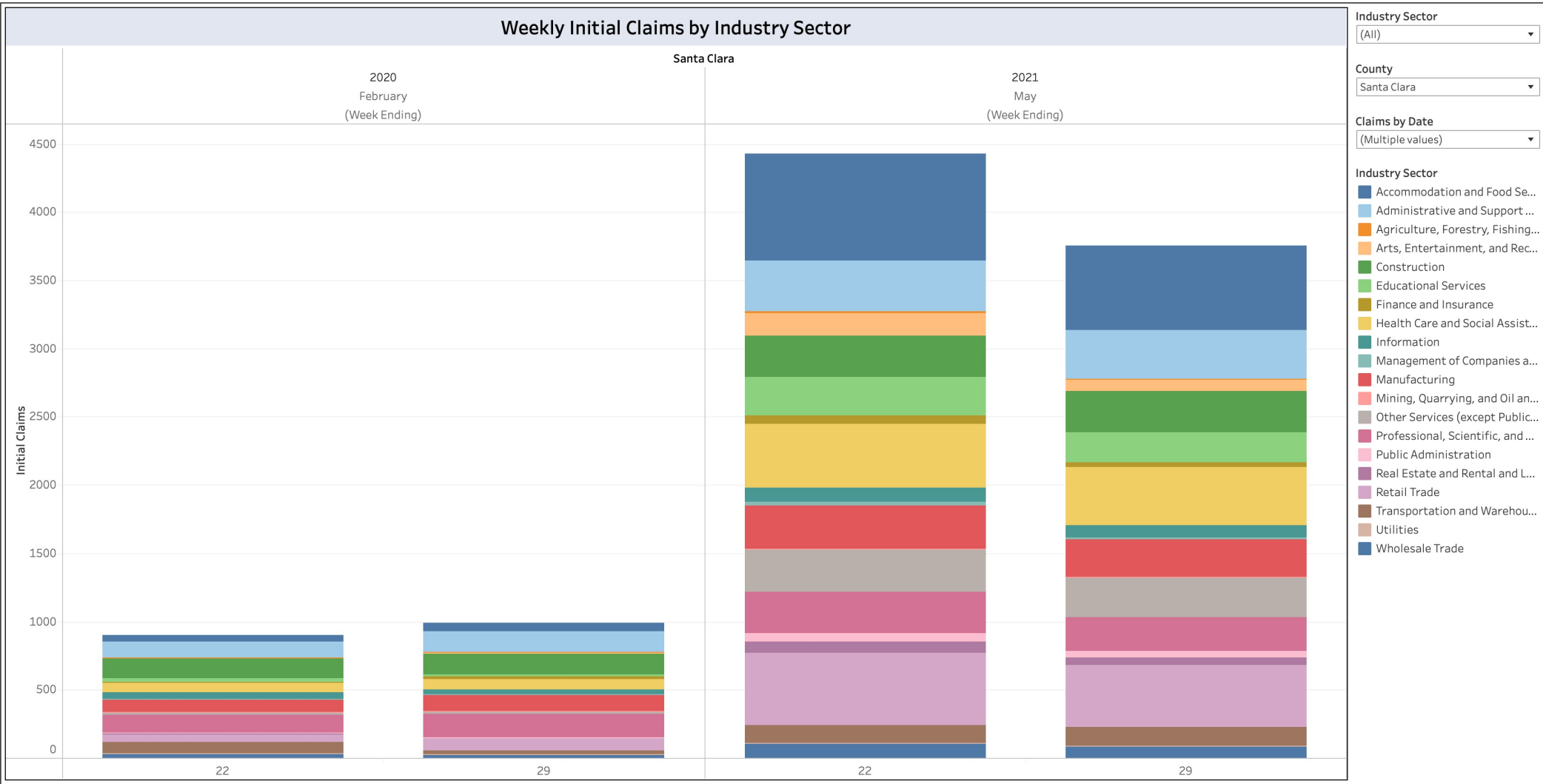
County Demographics

County Industry

Statewide Demographics

Statewide Industry

>



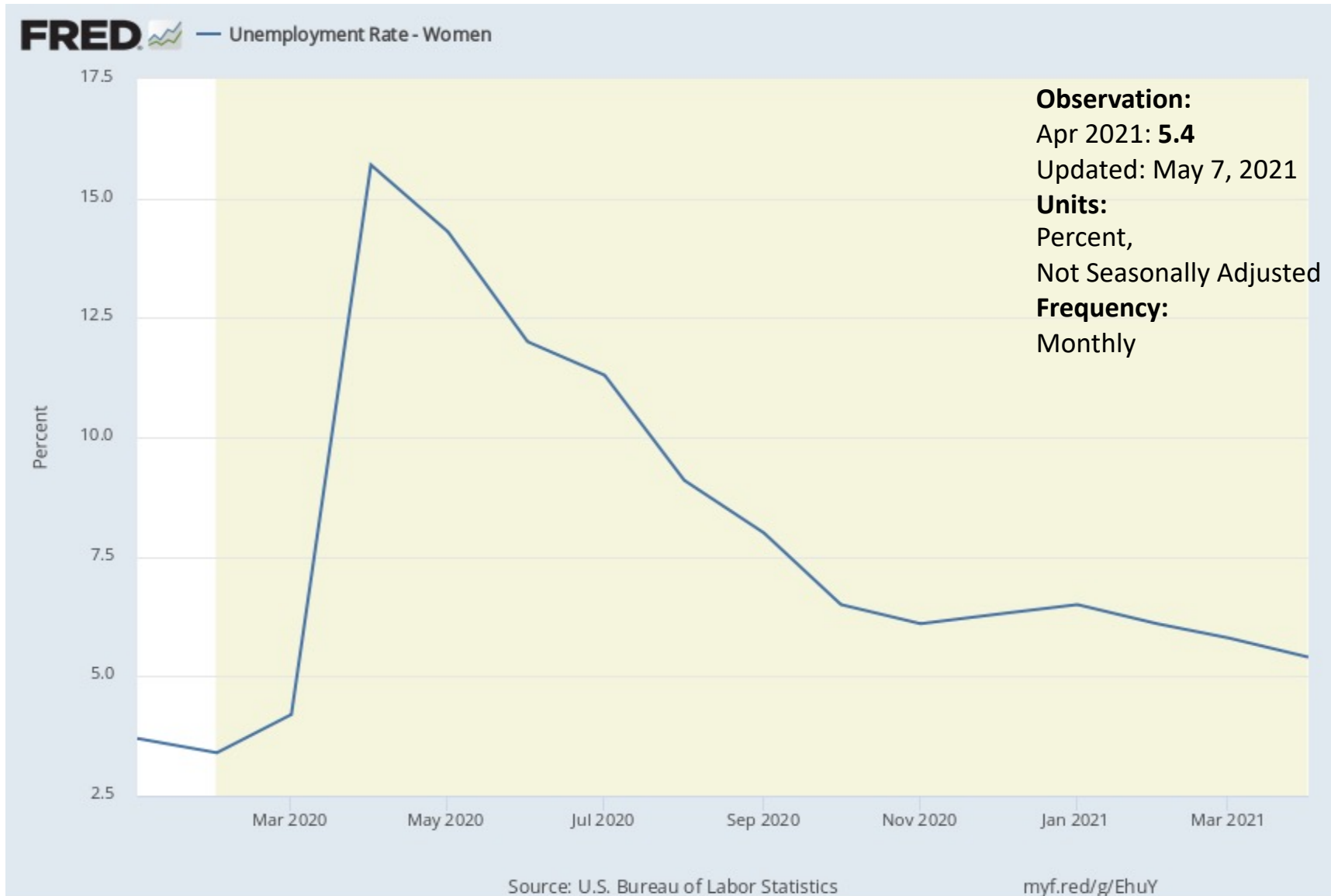
Correlation with COVID-19

Eastern San Jose and the south county areas around and including Gilroy have experienced most of the highest concentrations of COVID-19 infections. These areas also have most of the highest concentrations of Low Wage workers.

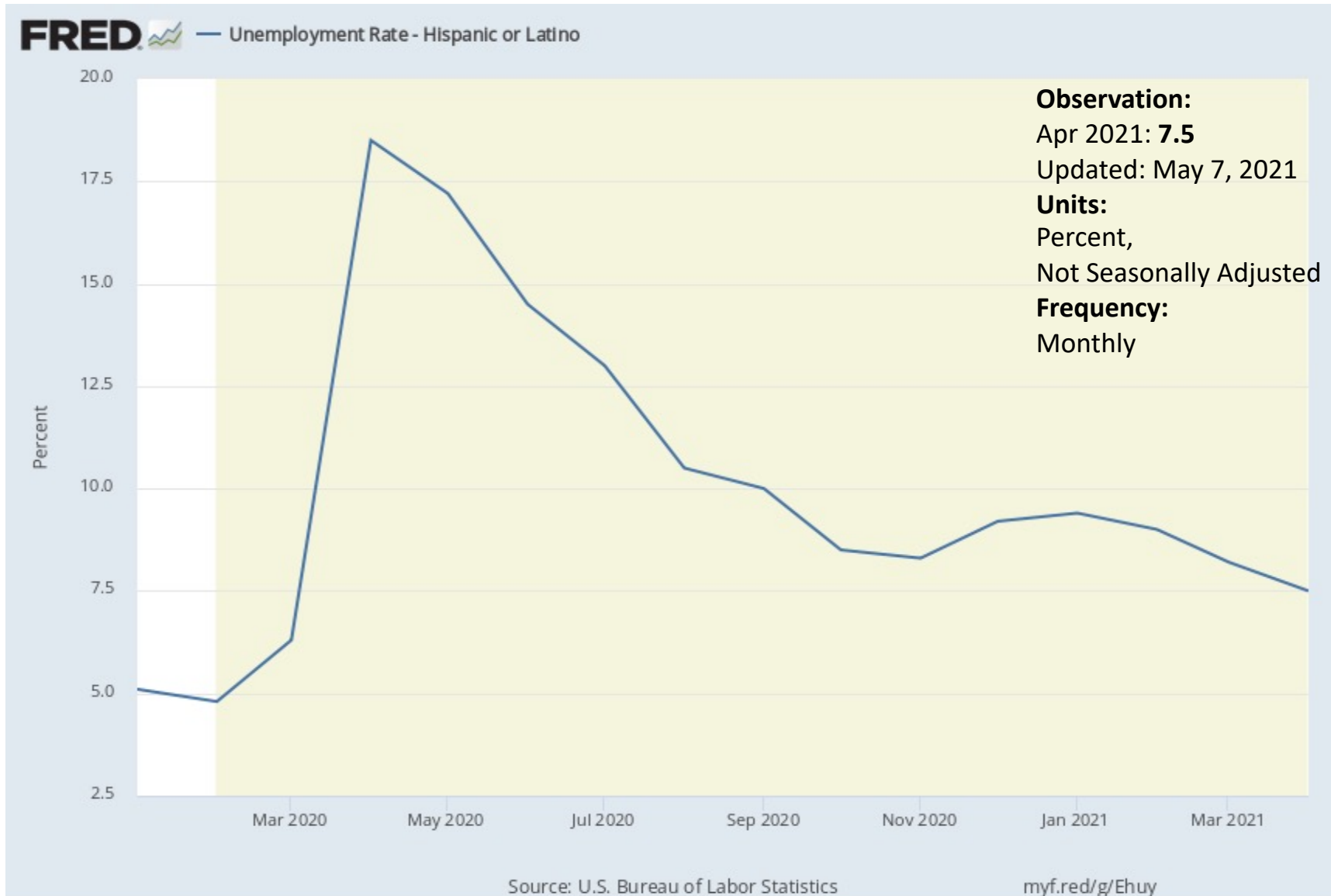
Demographic Unevenness

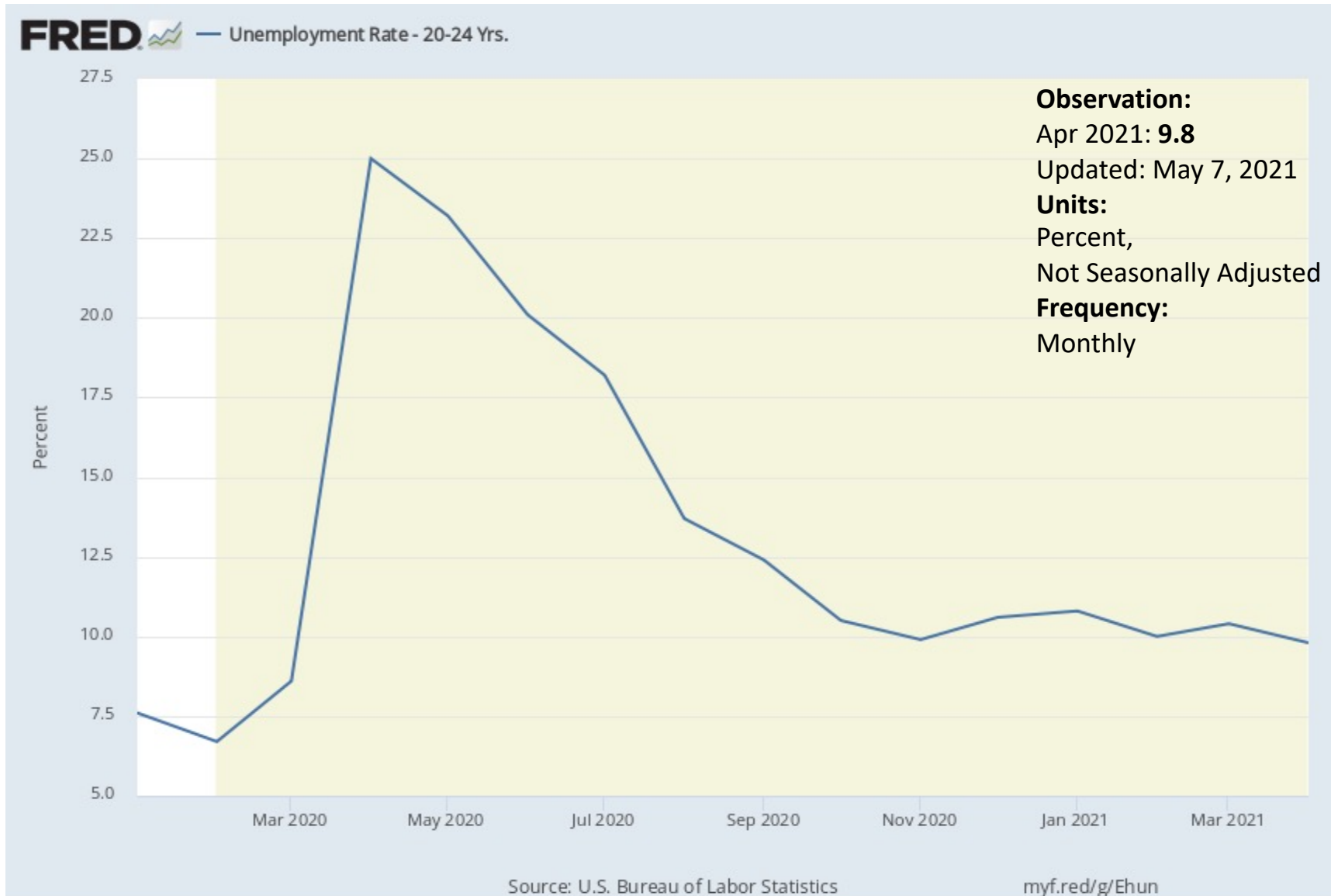
Nationally*, women, African Americans, Latinx and young workers suffered much higher levels of peak unemployment than other demographic groups. They have also tended to experience a slower recovery and remain significantly above their already high pre-pandemic levels (except women, who had low pre-pandemic unemployment rates)

*Monthly demographic snapshots are not reliably available at state and local levels.









What might work2future do?

- Increase emphasis on
 - Strategic and holistic programs approach to support attainment of quality jobs, economic mobility
 - Improving community outreach and engagement to reach underrepresented/underserved communities
 - Improving business intelligence and employer engagement for strategic gains
 - Ensuring that South County services are robust and align with need
- Move comprehensive one-stop to east side
- Add presence in satellite locations (Library branches? Others?)
- Build effective strategic partnerships

For more information:

Lawrence Thoo, Strategic Engagement Manager

work2future

(408)794-1170

lawrence.thoo@sanjoseca.gov